

TOWN OF POINT RICHMOND, MAP NO. 3 M. B. E-107

1- 102 P.M. 13 7-28-82: C.C. & R.'S 10905/405 8-25-82

2- 102 P.M. 14 7-28-82: C.C. & R.'S 10898/103 8-19-82



04

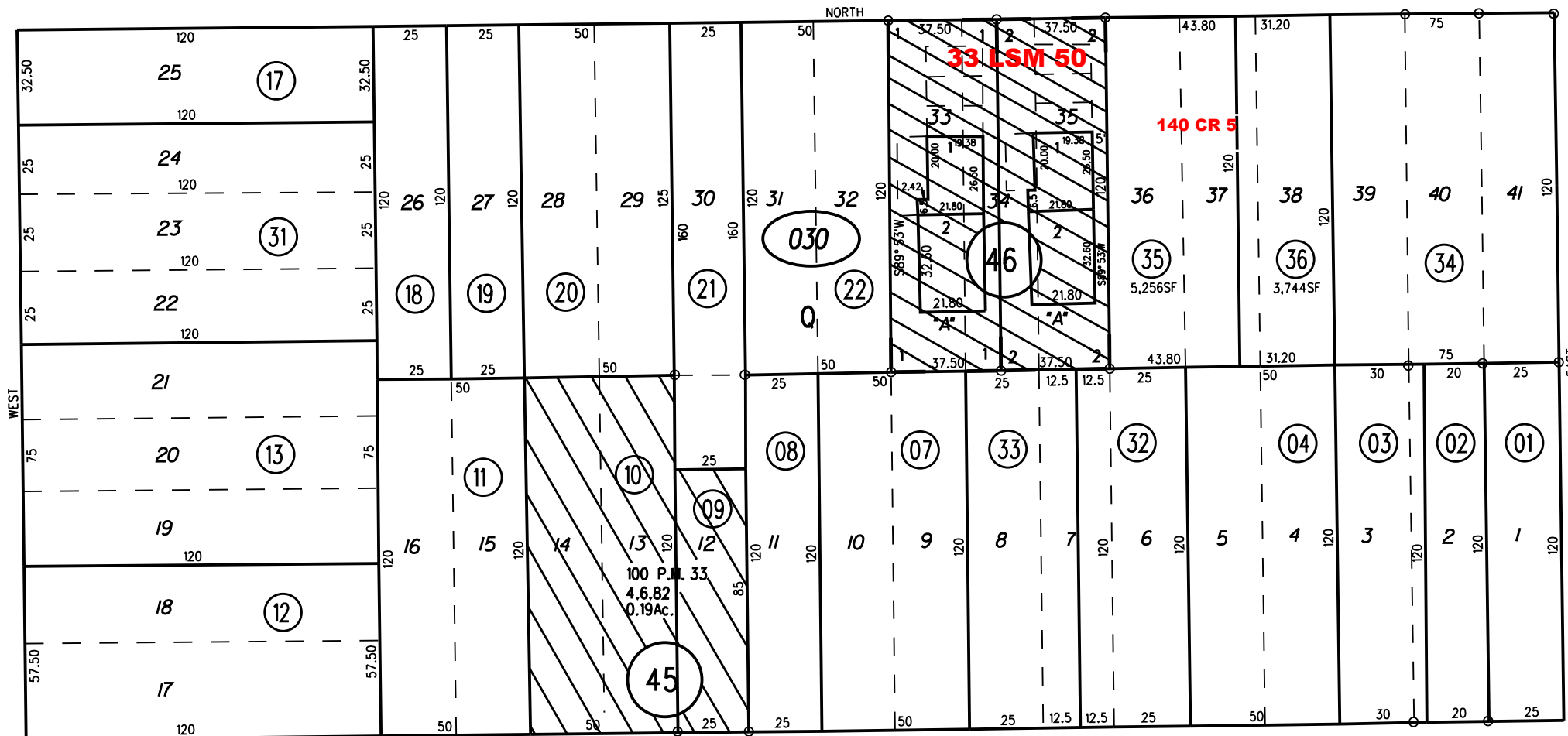
A ST

60

AVE

60

W. BARRETT



AVE

60

W. NEVIN

01

PB
534

60

B ST

ST

030

35,36
8/23/17

NOTE: THIS MAP WAS PREPARED FOR ASSESSMENT PURPOSES ONLY. NO LIABILITY IS ASSUMED FOR THE ACCURACY OF THE INFORMATION DELINEATED HEREON. ASSESSOR'S PARCELS MAY NOT COMPLY WITH LOCAL LOT SPLIT OR BUILDING SITE ORDINANCES.

02