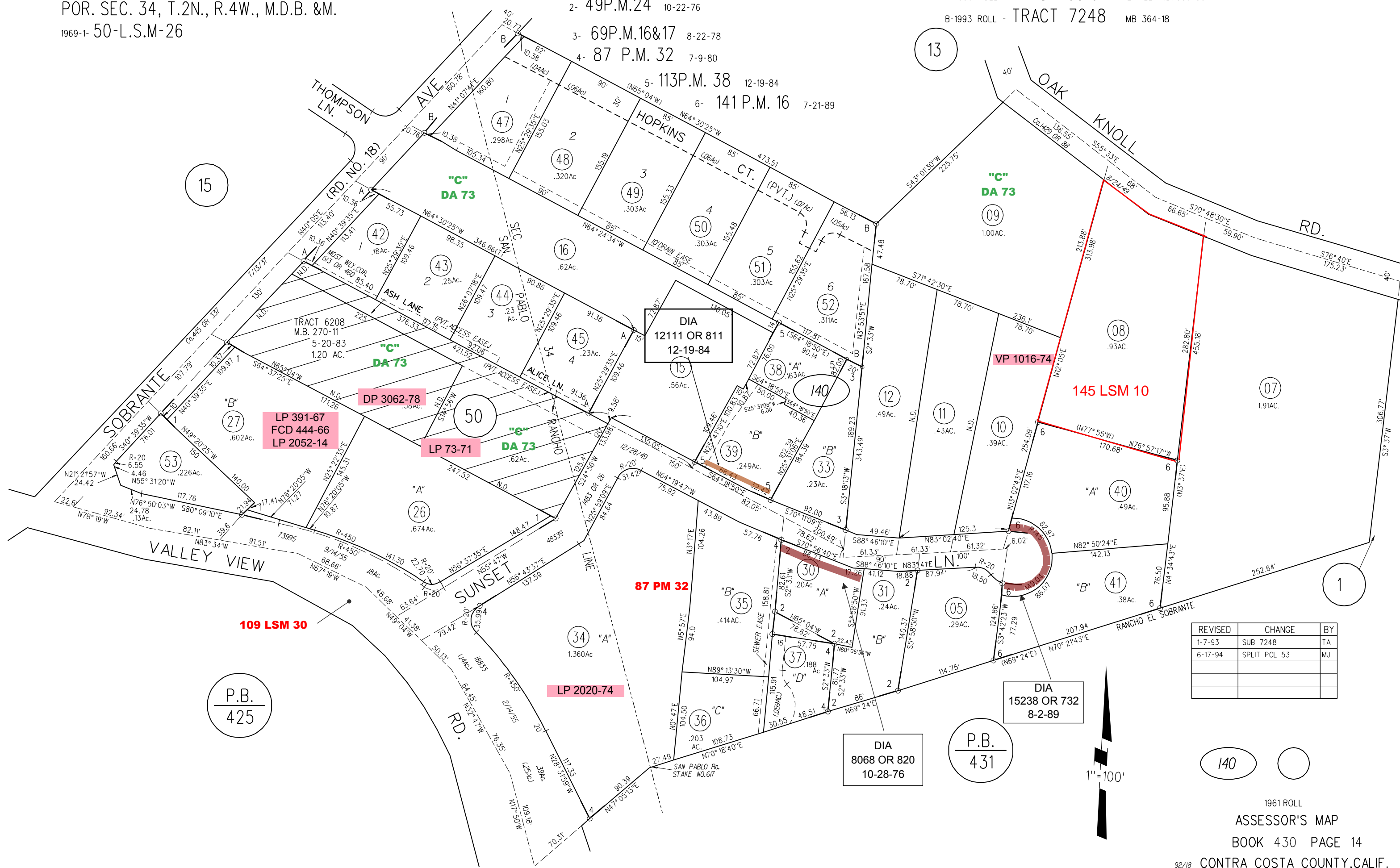


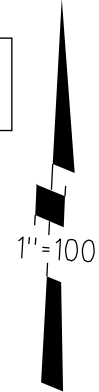
SAN PABLO RANCHO
 POR. SEC. 34, T.2N., R.4W., M.D.B. &M.
 1969-1- 50-L.S.M-26

2- 49P.M.24 10-22-76
 3- 69P.M.16&17 8-22-78
 4- 87 P.M. 32 7-9-80
 5- 113P.M. 38 12-19-84
 6- 141P.M. 16 7-21-89

TAX CODE AREA
 A-1990 ROLL - TRACT 6916 MAMRE HILL M.B. 336-33
 B-1993 ROLL - TRACT 7248 MB 364-18



REVISED	CHANGE	BY
1-7-93	SUB 7248	TA
6-17-94	SPLIT PCL 53	MJ



140