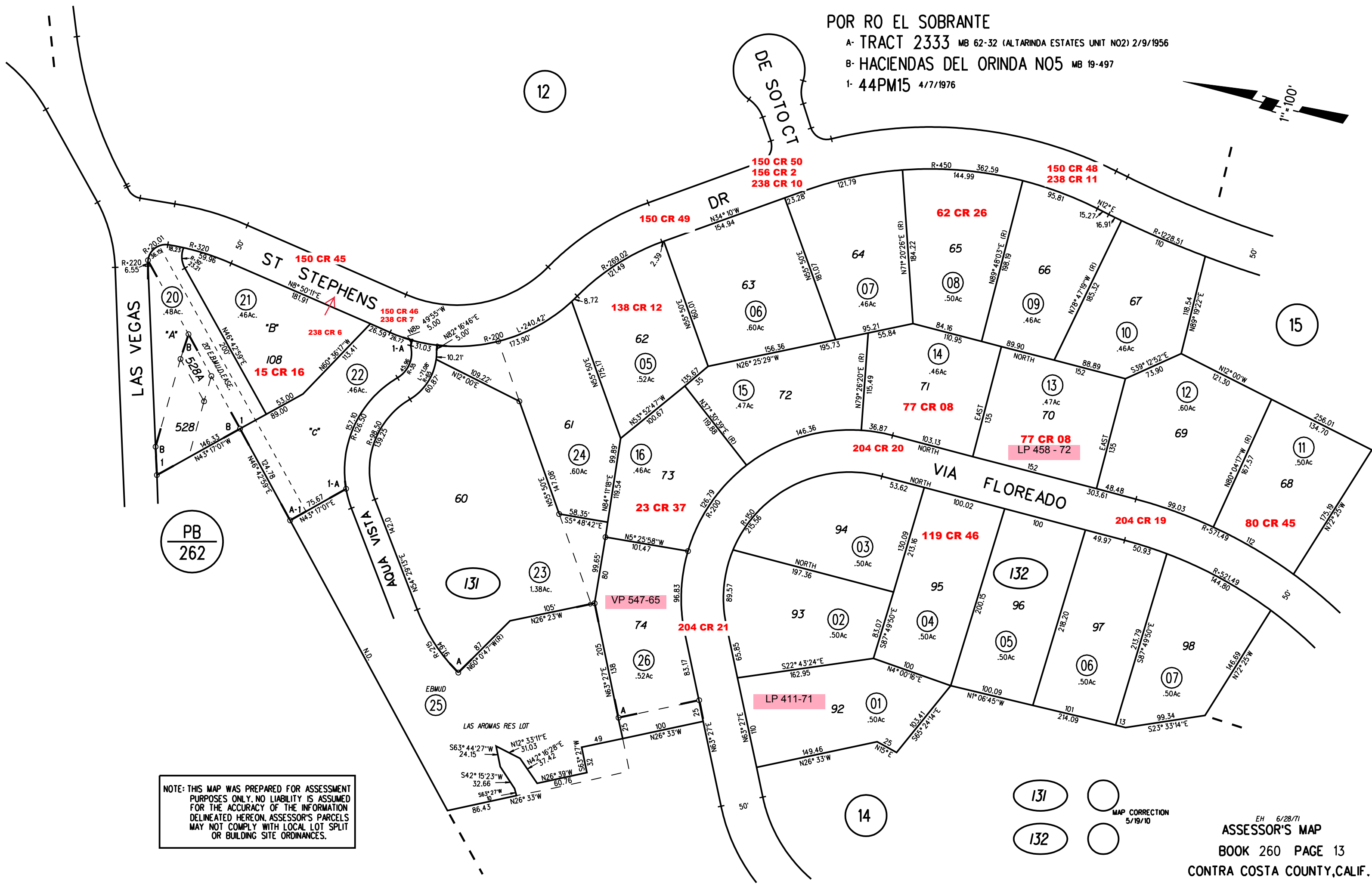


POR RO EL SOBRANTE

A- TRACT 2333 MB 62-32 (ALTARINDA ESTATES UNIT NO2) 2/9/1956

B- HACIENDAS DEL ORINDA NO5 MB 19-497

1- 44PM15 4/7/1976



NOTE: THIS MAP WAS PREPARED FOR ASSESSMENT PURPOSES ONLY. NO LIABILITY IS ASSUMED FOR THE ACCURACY OF THE INFORMATION DELINEATED HEREON. ASSESSOR'S PARCELS MAY NOT COMPLY WITH LOCAL LOT SPLIT OR BUILDING SITE ORDINANCES.

131
132
MAP CORRECTION
5/19/10