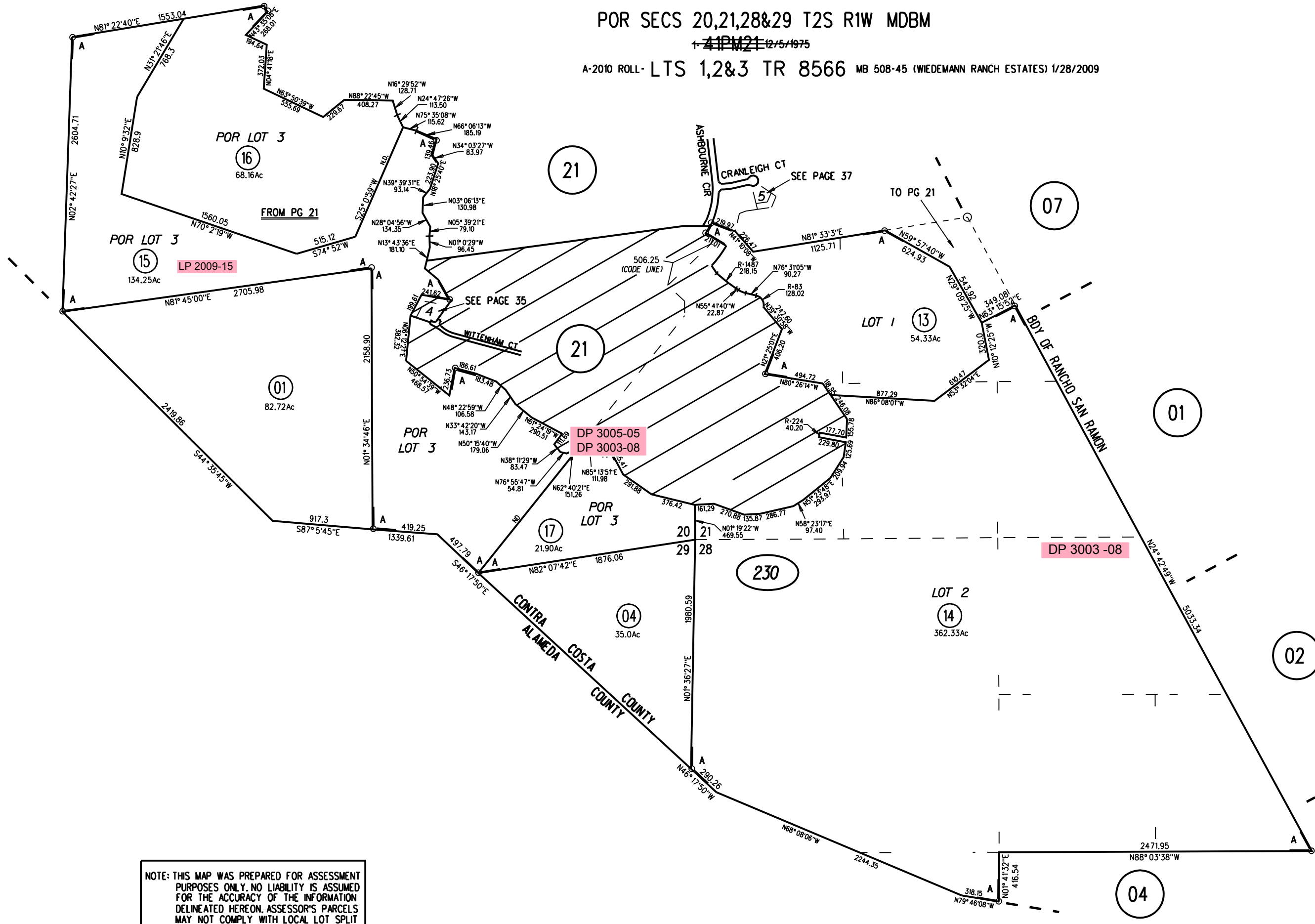


POR SECS 20,21,28&29 T2S R1W MDBM

41PM21 12/15/1975

A-2010 ROLL - LTS 1,2&3 TR 8566 MB 508-45 (WIEDEMANN RANCH ESTATES) 1/28/2009



NOTE: THIS MAP WAS PREPARED FOR ASSESSMENT PURPOSES ONLY. NO LIABILITY IS ASSUMED FOR THE ACCURACY OF THE INFORMATION DELINEATED HEREON. ASSESSOR'S PARCELS MAY NOT COMPLY WITH LOCAL LOT SPLIT OR BUILDING SITE ORDINANCES.