

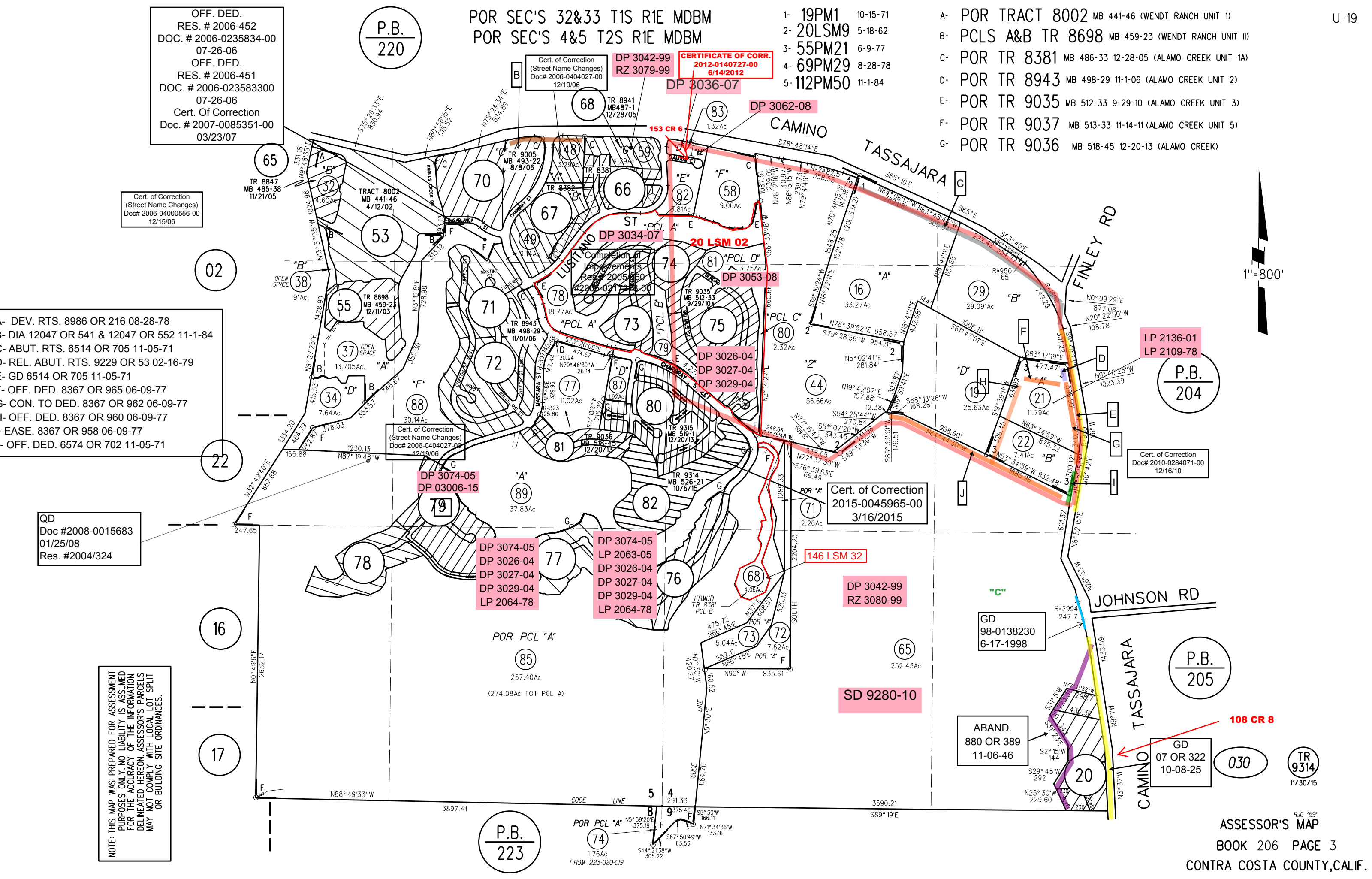
POR SEC'S 32&33 T1S R1E MDBM  
POR SEC'S 4&5 T2S R1E MDBM

OFF. DED.  
RES. # 2006-452  
DOC. # 2006-0235834-00  
07-26-06  
OFF. DED.  
RES. # 2006-451  
DOC. # 2006-023583300  
07-26-06  
Cert. Of Correction  
Doc. # 2007-0085351-00  
03/23/07

P.B.  
220

- 1- 19PM1 10-15-71
- 2- 20LSM9 5-18-62
- 3- 55PM21 6-9-77
- 4- 69PM29 8-28-78
- 5- 112PM50 11-1-84

- A- POR TRACT 8002 MB 441-46 (WENDT RANCH UNIT 1)
- B- PCLS A&B TR 8698 MB 459-23 (WENDT RANCH UNIT II)
- C- POR TR 8381 MB 486-33 12-28-05 (ALAMO CREEK UNIT 1A)
- D- POR TR 8943 MB 498-29 11-1-06 (ALAMO CREEK UNIT 2)
- E- POR TR 9035 MB 512-33 9-29-10 (ALAMO CREEK UNIT 3)
- F- POR TR 9037 MB 513-33 11-14-11 (ALAMO CREEK UNIT 5)
- G- POR TR 9036 MB 518-45 12-20-13 (ALAMO CREEK)



- A- DEV. RTS. 8986 OR 216 08-28-78
- B- DIA 12047 OR 541 & 12047 OR 552 11-1-84
- C- ABUT. RTS. 6514 OR 705 11-05-71
- D- REL. ABUT. RTS. 9229 OR 53 02-16-79
- E- GD 6514 OR 705 11-05-71
- F- OFF. DED. 8367 OR 965 06-09-77
- G- CON. TO DED. 8367 OR 962 06-09-77
- H- OFF. DED. 8367 OR 960 06-09-77
- I- EASE. 8367 OR 958 06-09-77
- J- OFF. DED. 6574 OR 702 11-05-71

QD  
Doc #2008-0015683  
01/25/08  
Res. #2004/324

NOTE: THIS MAP WAS PREPARED FOR ASSESSMENT PURPOSES ONLY. NO LIABILITY IS ASSUMED FOR THE ACCURACY OF THE INFORMATION DELINEATED HEREON. ASSESSOR'S PARCELS MAY NOT COMPLY WITH LOCAL LOT SPLIT OR BUILDING SITE ORDINANCES.