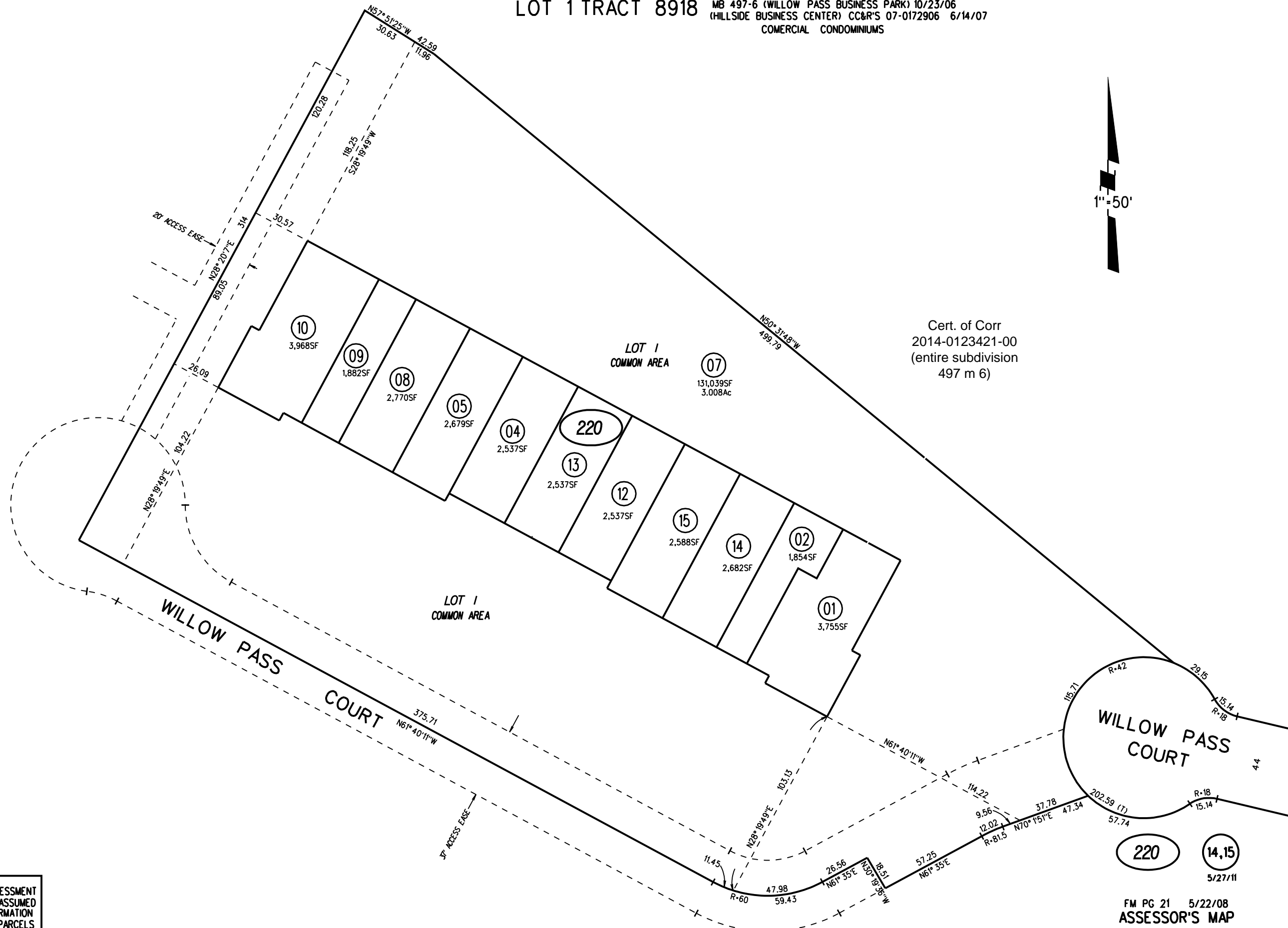


LOT 1 TRACT 8918 MB 497-6 (WILLOW PASS BUSINESS PARK) 10/23/06
(HILLSIDE BUSINESS CENTER) CC&R'S 07-0172906 6/14/07
COMERCIAL CONDOMINIUMS



Cert. of Corr
2014-0123421-00
(entire subdivision
497 m 6)



NOTE: THIS MAP WAS PREPARED FOR ASSESSMENT PURPOSES ONLY. NO LIABILITY IS ASSUMED FOR THE ACCURACY OF THE INFORMATION DELINEATED HEREON. ASSESSOR'S PARCELS MAY NOT COMPLY WITH LOCAL LOT SPLIT OR BUILDING SITE ORDINANCES.

220 14,15
5/27/11