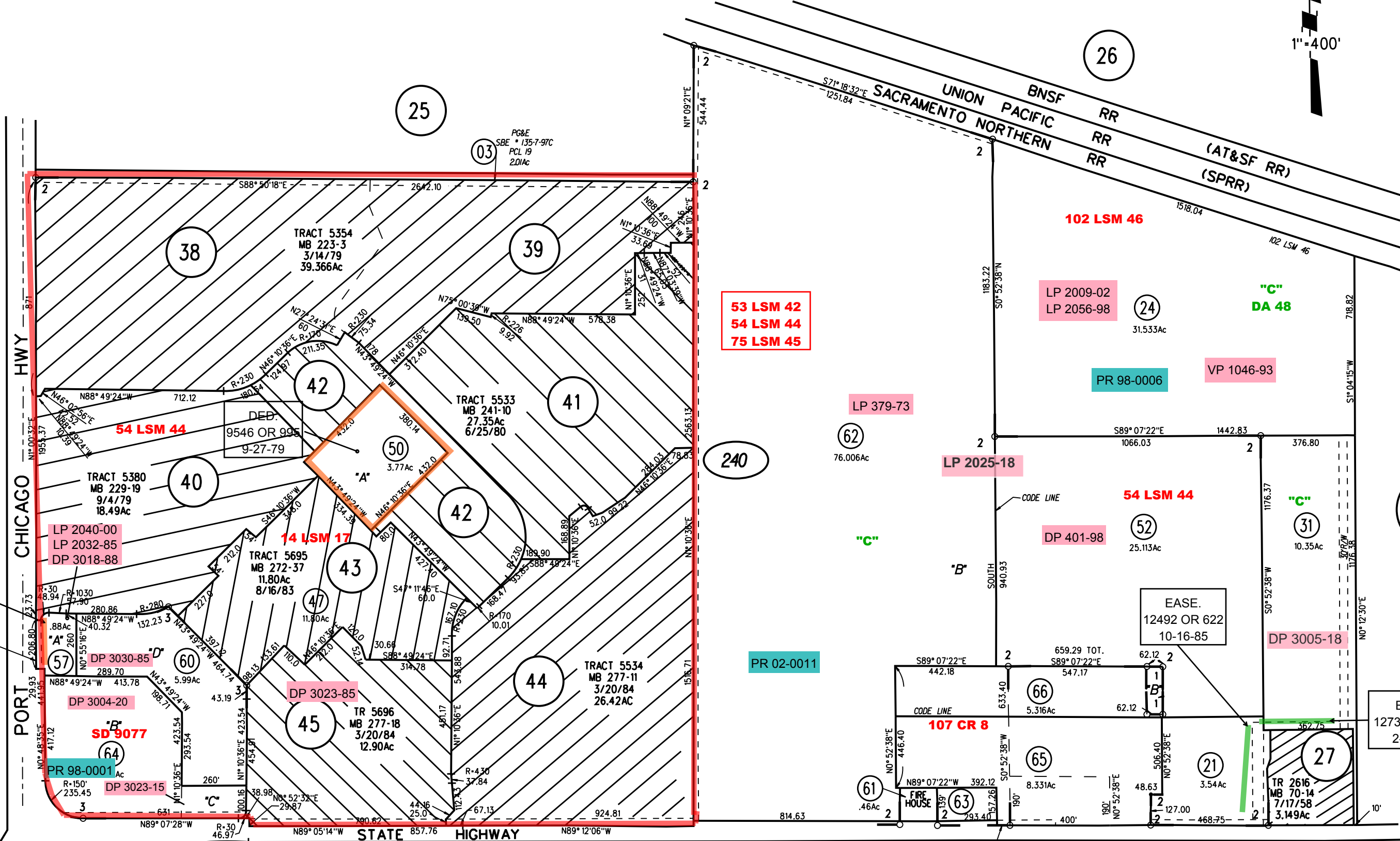


SE 1/4 SEC 10 & POR OF W 1/2 SEC 11 T2N RIW MDBM

- 1- 59LSM22 6/18/78
- 2- 70PM1 9/14/78
- 3- 113PM42 12/26/84



CON. TO DED.
12368 OR 562
6-19-85

DED. TO CO.

NOTE: THIS MAP WAS PREPARED FOR ASSESSMENT PURPOSES ONLY. NO LIABILITY IS ASSUMED FOR THE ACCURACY OF THE INFORMATION DELINEATED HEREON. ASSESSOR'S PARCELS MAY NOT COMPLY WITH LOCAL LOT SPLIT OR BUILDING SITE ORDINANCES.

M.B.
97

240

65,66
9-2-22

ASSESSOR'S MAP
BOOK 98 PAGE 24
CONTRA COSTA COUNTY, CALIF.