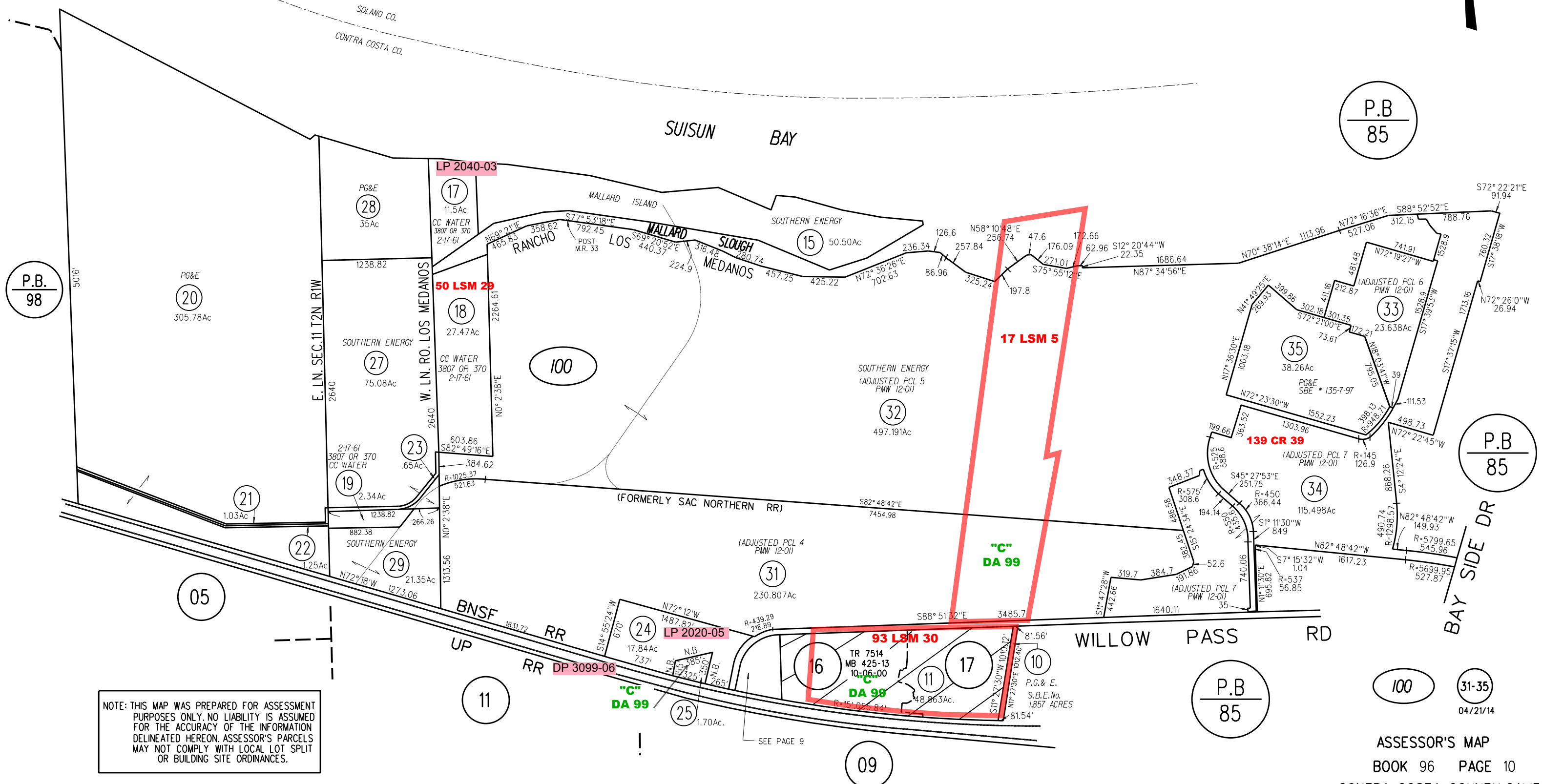


PORTION E. 1/2 SECTION 11 T2N R.1.W. M.D.B.&M.
 MALLARD ISLAND
 S.&O. LANDS LOCATION NO. 3471 4 PAT. 487
 PORTION RANCHO LOS MEDANOS

TIDELAND SURVEY 149 LSM 27

1" = 1000'



NOTE: THIS MAP WAS PREPARED FOR ASSESSMENT PURPOSES ONLY. NO LIABILITY IS ASSUMED FOR THE ACCURACY OF THE INFORMATION DELINEATED HEREON. ASSESSOR'S PARCELS MAY NOT COMPLY WITH LOCAL LOT SPLIT OR BUILDING SITE ORDINANCES.

P.B.
85

P.B.
98

P.B.
85

P.B.
85

100

31-35
04/21/14

ASSESSOR'S MAP
 BOOK 96 PAGE 10
 CONTRA COSTA COUNTY, CALIF.

Sanborn Date : 14/03/2000