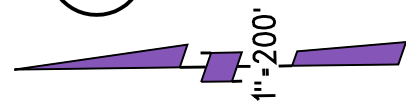


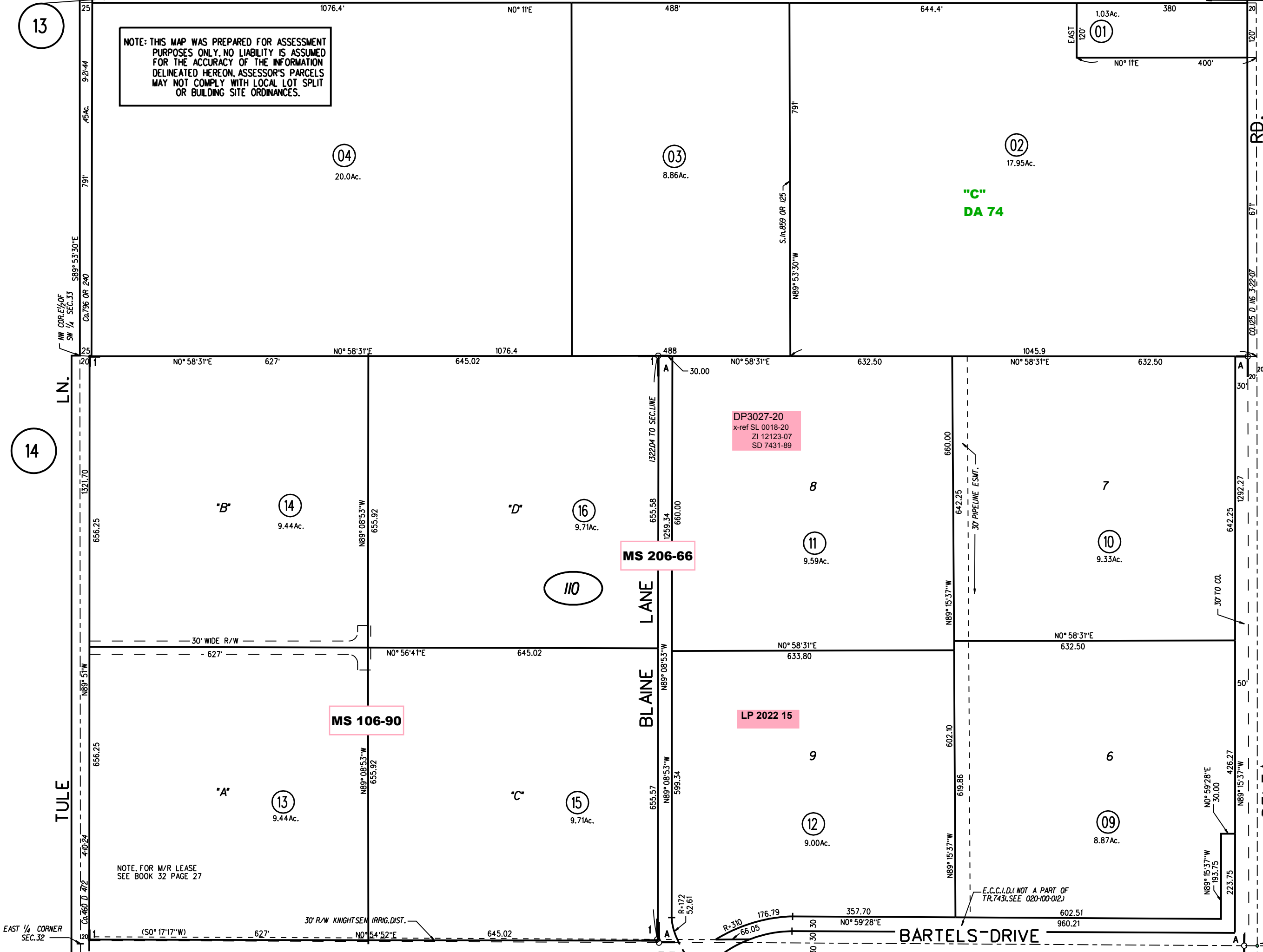
13

12

NOTE: THIS MAP WAS PREPARED FOR ASSESSMENT PURPOSES ONLY. NO LIABILITY IS ASSUMED FOR THE ACCURACY OF THE INFORMATION DELINEATED HEREON. ASSESSOR'S PARCELS MAY NOT COMPLY WITH LOCAL LOT SPLIT OR BUILDING SITE ORDINANCES.



SW 1/4 SEC 33
T2N R3E MDBM
A-1997- POR TR 7431 MB 388-23
1-182P.M49 12-28-01



19

14

28

110

13-16
MAP CORRECTION
10/17/05

ASSESSOR'S MAP
BOOK 20 PAGE 11
CONTRA COSTA COUNTY, CALIF.

33 4
32 5

EAST 1/4 CORNER
SEC. 32

NOTE. FOR M/R LEASE
SEE BOOK 32 PAGE 27

E.C.C.I.D. (NOT A PART OF
TR. 7431. SEE 020-100-012.)

MS 206-66

MS 106-90

DP3027-20
x-ref SL 0018-20
ZI 12123-07
SD 7431-89

LP 2022 15

"C"
DA 74

BLAINE LANE

BARTELS DRIVE

DELTA

LN.

TULE

RD.

DELTA

EAST 1/4 CORNER
SEC. 32

NOTE. FOR M/R LEASE
SEE BOOK 32 PAGE 27

E.C.C.I.D. (NOT A PART OF
TR. 7431. SEE 020-100-012.)

MS 206-66

MS 106-90

DP3027-20
x-ref SL 0018-20
ZI 12123-07
SD 7431-89

LP 2022 15

"C"
DA 74

BLAINE LANE

BARTELS DRIVE

DELTA

LN.

TULE

RD.

DELTA

EAST 1/4 CORNER
SEC. 32

NOTE. FOR M/R LEASE
SEE BOOK 32 PAGE 27

E.C.C.I.D. (NOT A PART OF
TR. 7431. SEE 020-100-012.)

MS 206-66

MS 106-90

DP3027-20
x-ref SL 0018-20
ZI 12123-07
SD 7431-89

LP 2022 15

"C"
DA 74

BLAINE LANE

BARTELS DRIVE

DELTA

LN.

TULE

RD.

DELTA

EAST 1/4 CORNER
SEC. 32

NOTE. FOR M/R LEASE
SEE BOOK 32 PAGE 27

E.C.C.I.D. (NOT A PART OF
TR. 7431. SEE 020-100-012.)

MS 206-66

MS 106-90

DP3027-20
x-ref SL 0018-20
ZI 12123-07
SD 7431-89

LP 2022 15

"C"
DA 74

BLAINE LANE

BARTELS DRIVE

DELTA

LN.

TULE

RD.

DELTA

EAST 1/4 CORNER
SEC. 32

NOTE. FOR M/R LEASE
SEE BOOK 32 PAGE 27

E.C.C.I.D. (NOT A PART OF
TR. 7431. SEE 020-100-012.)

MS 206-66

MS 106-90

DP3027-20
x-ref SL 0018-20
ZI 12123-07
SD 7431-89

LP 2022 15

"C"
DA 74

BLAINE LANE

BARTELS DRIVE

DELTA

LN.

TULE

RD.

DELTA

EAST 1/4 CORNER
SEC. 32

NOTE. FOR M/R LEASE
SEE BOOK 32 PAGE 27

E.C.C.I.D. (NOT A PART OF
TR. 7431. SEE 020-100-012.)

MS 206-66

MS 106-90

DP3027-20
x-ref SL 0018-20
ZI 12123-07
SD 7431-89

LP 2022 15

"C"
DA 74

BLAINE LANE

BARTELS DRIVE

DELTA

LN.

TULE

RD.

DELTA

EAST 1/4 CORNER
SEC. 32

NOTE. FOR M/R LEASE
SEE BOOK 32 PAGE 27

E.C.C.I.D. (NOT A PART OF
TR. 7431. SEE 020-100-012.)

MS 206-66

MS 106-90

DP3027-20
x-ref SL 0018-20
ZI 12123-07
SD 7431-89

LP 2022 15

"C"
DA 74

BLAINE LANE

BARTELS DRIVE

DELTA

LN.

TULE

RD.

DELTA

EAST 1/4 CORNER
SEC. 32

NOTE. FOR M/R LEASE
SEE BOOK 32 PAGE 27

E.C.C.I.D. (NOT A PART OF
TR. 7431. SEE 020-100-012.)

MS 206-66

MS 106-90

DP3027-20
x-ref SL 0018-20
ZI 12123-07
SD 7431-89

LP 2022 15

"C"
DA 74

BLAINE LANE

BARTELS DRIVE

DELTA

LN.

TULE

RD.

DELTA

EAST 1/4 CORNER
SEC. 32

NOTE. FOR M/R LEASE
SEE BOOK 32 PAGE 27

E.C.C.I.D. (NOT A PART OF
TR. 7431. SEE 020-100-012.)

MS 206-66

MS 106-90

DP3027-20
x-ref SL 0018-20
ZI 12123-07
SD 7431-89

LP 2022 15

"C"
DA 74

BLAINE LANE

BARTELS DRIVE

DELTA

LN.

TULE

RD.

DELTA

EAST 1/4 CORNER
SEC. 32

NOTE. FOR M/R LEASE
SEE BOOK 32 PAGE 27

E.C.C.I.D. (NOT A PART OF
TR. 7431. SEE 020-100-012.)

MS 206-66

MS 106-90

DP3027-20
x-ref SL 0018-20
ZI 12123-07
SD 7431-89

LP 2022 15

"C"
DA 74

BLAINE LANE

BARTELS DRIVE

DELTA

LN.

TULE

RD.

DELTA

EAST 1/4 CORNER
SEC. 32

NOTE. FOR M/R LEASE
SEE BOOK 32 PAGE 27

E.C.C.I.D. (NOT A PART OF
TR. 7431. SEE 020-100-012.)

MS 206-66

MS 106-90

DP3027-20
x-ref SL 0018-20
ZI 12123-07
SD 7431-89

LP 2022 15

"C"
DA 74

BLAINE LANE

BARTELS DRIVE

DELTA

LN.

TULE

RD.

DELTA

EAST 1/4 CORNER
SEC. 32

NOTE. FOR M/R LEASE
SEE BOOK 32 PAGE 27

E.C.C.I.D. (NOT A PART OF
TR. 7431. SEE 020-100-012.)

MS 206-66

MS 106-90

DP3027-20
x-ref SL 0018-20
ZI 12123-07
SD 7431-89

LP 2022 15

"C"
DA 74

BLAINE LANE

BARTELS DRIVE

DELTA

LN.

TULE

RD.

DELTA

EAST 1/4 CORNER
SEC. 32

NOTE. FOR M/R LEASE
SEE BOOK 32 PAGE 27

E.C.C.I.D. (NOT A PART OF
TR. 7431. SEE 020-100-012.)

MS 206-66

MS 106-90

DP3027-20
x-ref SL 0018-20
ZI 12123-07
SD 7431-89

LP 2022 15

"C"
DA 74

BLAINE LANE

BARTELS DRIVE

DELTA

LN.

TULE

RD.

DELTA

EAST 1/4 CORNER
SEC. 32

NOTE. FOR M/R LEASE
SEE BOOK 32 PAGE 27

E.C.C.I.D. (NOT A PART OF
TR. 7431. SEE 020-100-012.)

MS 206-66

MS 106-90

DP3027-20
x-ref SL 0018-20
ZI 12123-07
SD 7431-89

LP 2022 15

"C"
DA 74

BLAINE LANE

BARTELS DRIVE

DELTA

LN.

TULE

RD.

DELTA

EAST 1/4 CORNER
SEC. 32

NOTE. FOR M/R LEASE
SEE BOOK 32 PAGE 27

E.C.C.I.D. (NOT A PART OF
TR. 7431. SEE 020-100-012.)

MS 206-66

MS 106-90

DP3027-20
x-ref SL 0018-20
ZI 12123-07
SD 7431-89

LP 2022 15

"C"
DA 74

BLAINE LANE

BARTELS DRIVE

DELTA

LN.

TULE

RD.

DELTA

EAST 1/4 CORNER
SEC. 32

NOTE. FOR M/R LEASE
SEE BOOK 32 PAGE 27

E.C.C.I.D. (NOT A PART OF
TR. 7431. SEE 020-100-012.)

MS 206-66

MS 106-90

DP3027-20
x-ref SL 0018-20
ZI 12123-07
SD 7431-89

LP 2022 15

"C"
DA 74

BLAINE LANE

BARTELS DRIVE

DELTA

LN.

TULE

RD.

DELTA

EAST 1/4 CORNER
SEC. 32

NOTE. FOR M/R LEASE
SEE BOOK 32 PAGE 27

E.C.C.I.D. (NOT A PART OF
TR. 7431. SEE 020-100-012.)

MS 206-66

MS 106-90

DP3027-20
x-ref SL 0018-20
ZI 12123-07
SD 7431-89

LP 2022 15

"C"
DA 74

BLAINE LANE

BARTELS DRIVE

DELTA

LN.

TULE

RD.

DELTA

EAST 1/4 CORNER
SEC. 32

NOTE. FOR M/R LEASE
SEE BOOK 32 PAGE 27

E.C.C.I.D. (NOT A PART OF
TR. 7431. SEE 020-100-012.)

MS 206-66

MS 106-90

DP3027-20
x-ref SL 0018-20
ZI 12123-07
SD 7431-89

LP 2022 15

"C"
DA 74

BLAINE LANE