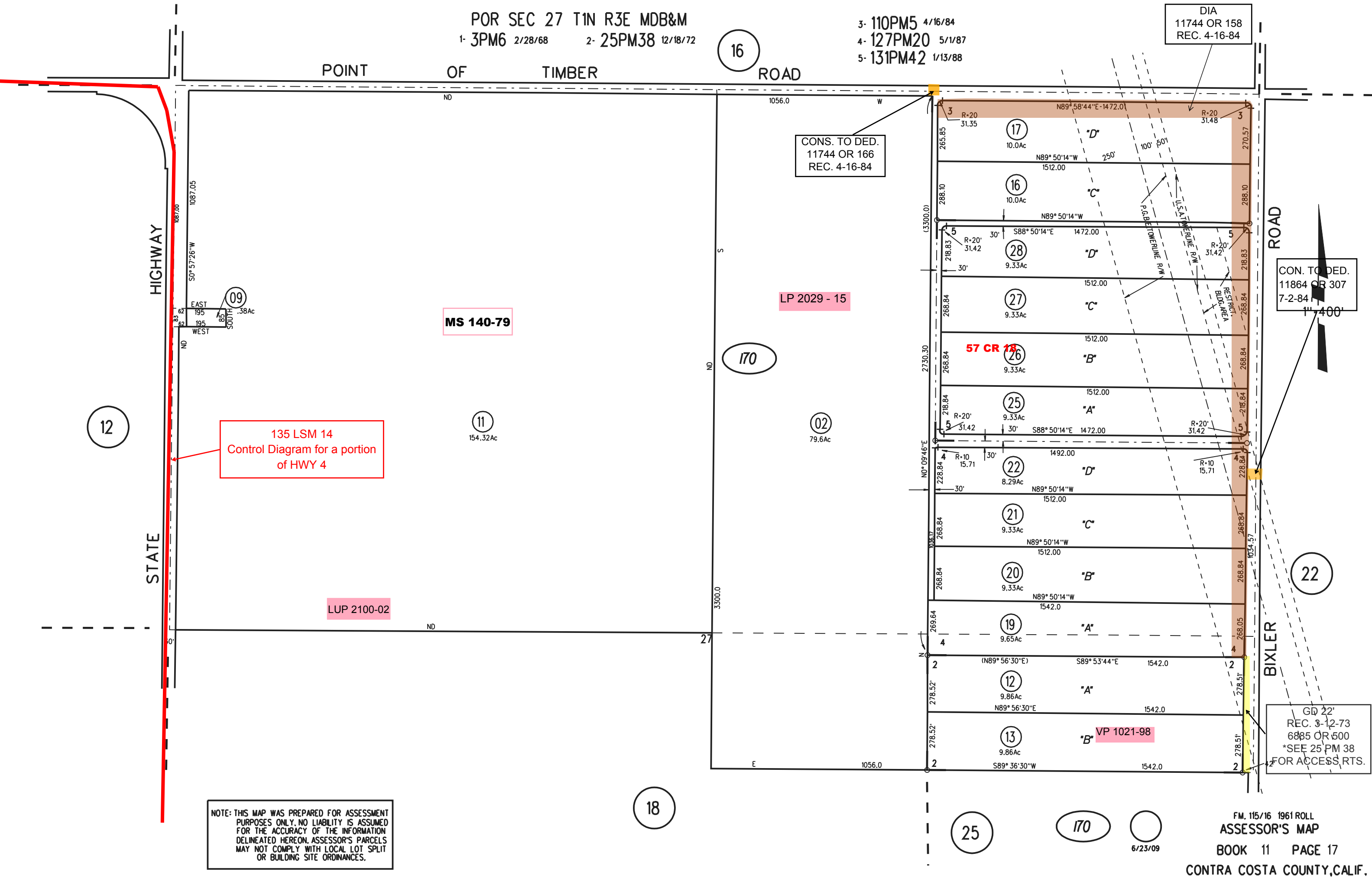


POR SEC 27 T1N R3E MDB&M
 1- 3PM6 2/28/68 2- 25PM38 12/18/72

3- 110PM5 4/16/84
 4- 127PM20 5/1/87
 5- 131PM42 1/13/88

DIA
 11744 OR 158
 REC. 4-16-84

POINT OF TIMBER ROAD



NOTE: THIS MAP WAS PREPARED FOR ASSESSMENT PURPOSES ONLY. NO LIABILITY IS ASSUMED FOR THE ACCURACY OF THE INFORMATION DELINEATED HEREON. ASSESSOR'S PARCELS MAY NOT COMPLY WITH LOCAL LOT SPLIT OR BUILDING SITE ORDINANCES.

CON. TO DED.
 11864 OR 307
 7-2-84

GD 22'
 REC. 3-12-73
 6885 OR 500
 *SEE 25 PM 38
 FOR ACCESS RTS.

18

25

170

6/23/09