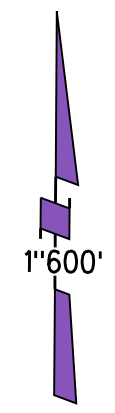


POR SECS 25,26&36 T1N R3E MDB&M

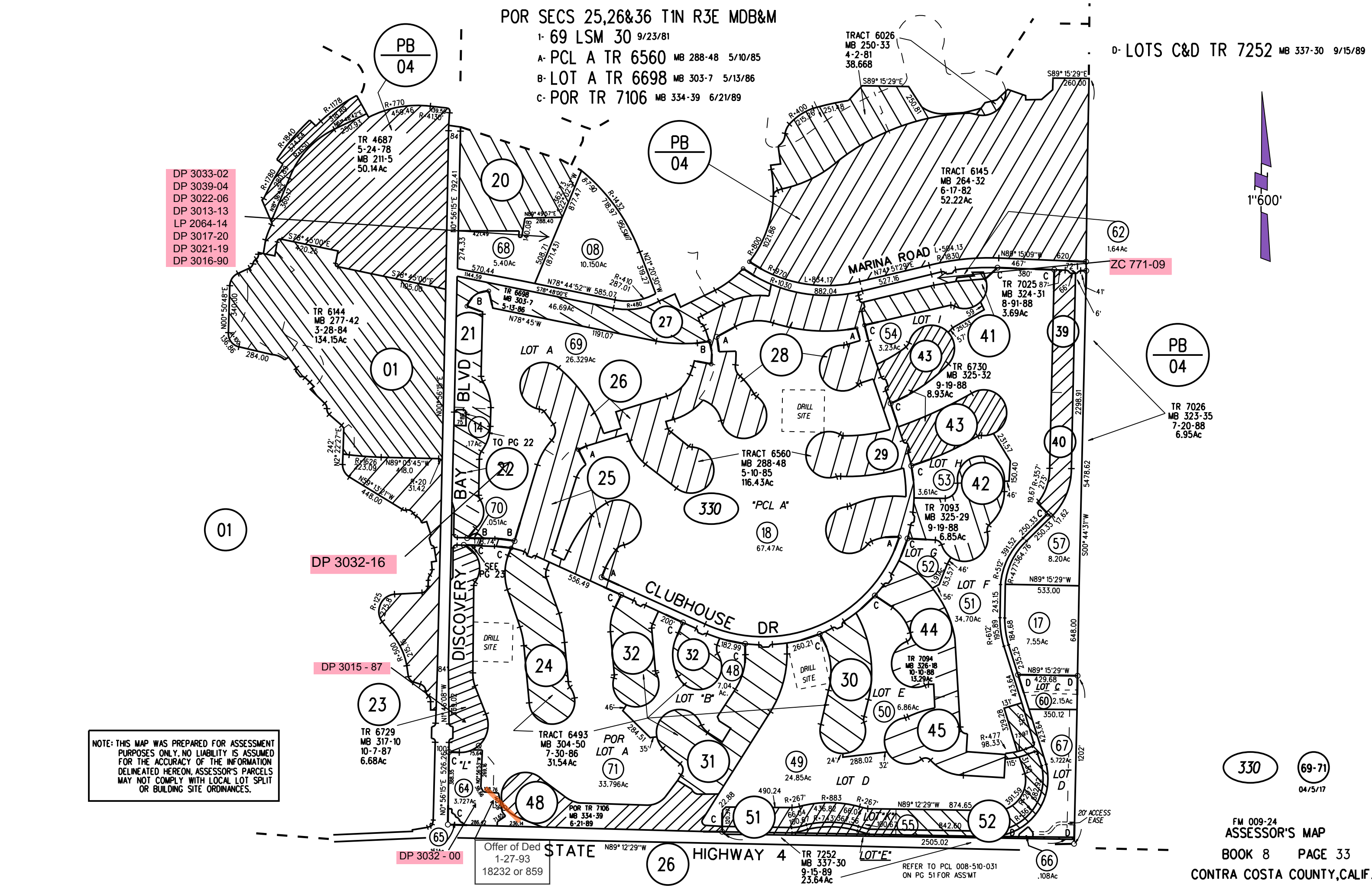
- 1- 69 LSM 30 9/23/81
- A- PCL A TR 6560 MB 288-48 5/10/85
- B- LOT A TR 6698 MB 303-7 5/13/86
- C- POR TR 7106 MB 334-39 6/21/89

D- LOTS C&D TR 7252 MB 337-30 9/15/89

- DP 3033-02
- DP 3039-04
- DP 3022-06
- DP 3013-13
- LP 2064-14
- DP 3017-20
- DP 3021-19
- DP 3016-90



NOTE: THIS MAP WAS PREPARED FOR ASSESSMENT PURPOSES ONLY. NO LIABILITY IS ASSUMED FOR THE ACCURACY OF THE INFORMATION DELINEATED HEREON. ASSESSOR'S PARCELS MAY NOT COMPLY WITH LOCAL LOT SPLIT OR BUILDING SITE ORDINANCES.



330 (69-71)  
04/5/17

REFER TO PCL 008-510-031  
ON PG 51 FOR ASS'MT

Offer of Ded  
1-27-93  
18232 or 859

DP 3032-00

TR 6729  
MB 317-10  
10-7-87  
6.68Ac

DP 3032-16

DP 3015-87

TR 7252  
MB 337-30  
9-15-89  
23.64Ac

TR 7093  
MB 325-29  
9-19-88  
6.85Ac

TR 7094  
MB 326-18  
10-10-88  
13.29Ac

TRACT 6493  
MB 304-50  
7-30-86  
31.54Ac

TRACT 6560  
MB 288-48  
5-10-85  
116.43Ac

TRACT 6145  
MB 264-32  
6-17-82  
52.22Ac

TR 6144  
MB 277-42  
3-28-84  
134.15Ac

TR 4687  
5-24-78  
MB 211-5  
50.14Ac

TR 7026  
MB 323-35  
7-20-88  
6.95Ac

TR 7025  
MB 324-31  
8-91-88  
3.69Ac

TR 6730  
MB 325-32  
9-19-88  
8.93Ac

POR TR 7106  
MB 334-39  
6-21-89

TO PG 22  
SEE PG 23

TR 6698  
MB 303-7  
5-13-86

TR 6698  
MB 303-7  
5-13-86

PB 04

PB 04

PB 04

26

66

71

49

50

67

23

24

48

45

60

70

25

330

29

57

22

26

18

43

40

14

27

28

41

39

21

69

27

43

40

01

20

08

41

62

01

21

28

43

39

01

20

08

41

62

01

20

08

41

62

01

20

08

41

62

01

20

08

41

62