

DOUGHERTY RANCH MB B-45 5/2/1894

- A- POR TRACT 8306 MB 492-47 (GALE RANCH) 8/1/2006
- B- POR TRACT 8952 MB 509-1 (GALE RANCH) 3/20/2009
- C- POR TRACT 8970 MB 511-18 (GALE RANCH) 4/23/10
- D- POR TRACT 8969 MB 513-17 (GALE RANCH) 6/16/11
- E- TRACT 9374 MB 521-48 (GALE RANCH) 11/13/14
- F-2017- POR TRACT 9326 MB 531-28 (GALE RANCH) 12/23/16

- 1- 202PM30 5/27/2008
- 2- 206PM16 5/17/2011
- 3- 207PM21 5/24/2012
- 4- 217PM37 6/18/2021

Cert. of Correction
2015-0045964-00
3/16/2015

Cert. of Correction
2015-0045963-00
3/16/2015

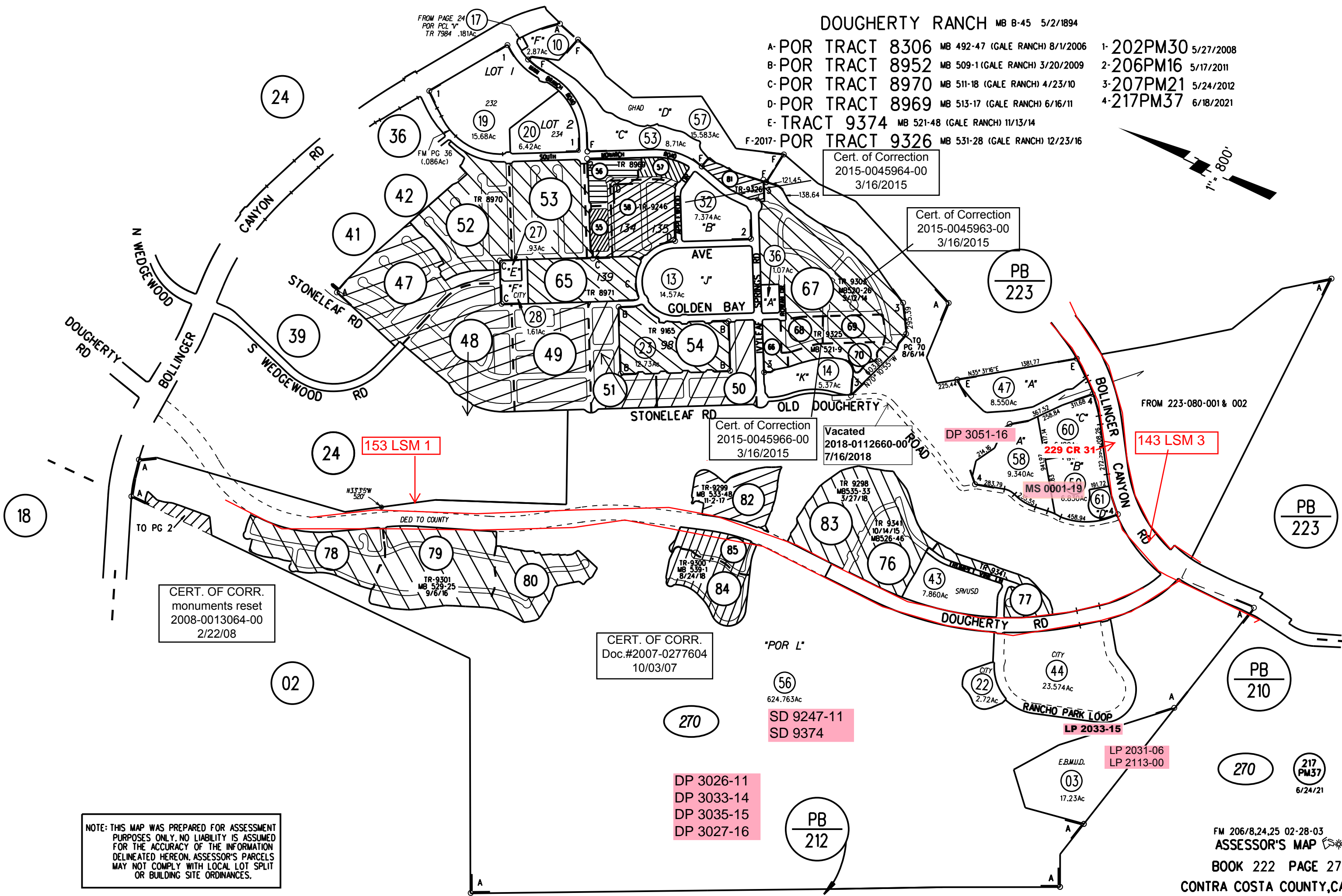
Cert. of Correction
2015-0045966-00
3/16/2015

Vacated
2018-0112660-00
7/16/2018

CERT. OF CORR.
monuments reset
2008-0013064-00
2/22/08

CERT. OF CORR.
Doc.#2007-0277604
10/03/07

NOTE: THIS MAP WAS PREPARED FOR ASSESSMENT PURPOSES ONLY. NO LIABILITY IS ASSUMED FOR THE ACCURACY OF THE INFORMATION DELINEATED HEREON. ASSESSOR'S PARCELS MAY NOT COMPLY WITH LOCAL LOT SPLIT OR BUILDING SITE ORDINANCES.



153 LSM 1

143 LSM 3

DP 3051-16

229 CR 31

MS 0001-19

SD 9247-11
SD 9374

DP 3026-11
DP 3033-14
DP 3035-15
DP 3027-16

LP 2031-06
LP 2113-00

LP 2033-15

217 PM37
6/24/21

270

270

PB 212

PB 210

PB 223

PB 223

24

24

18

02

17

19

20

27

28

28

28

28

28

28

28

28

28

28

28

28

28

28

28

28

28