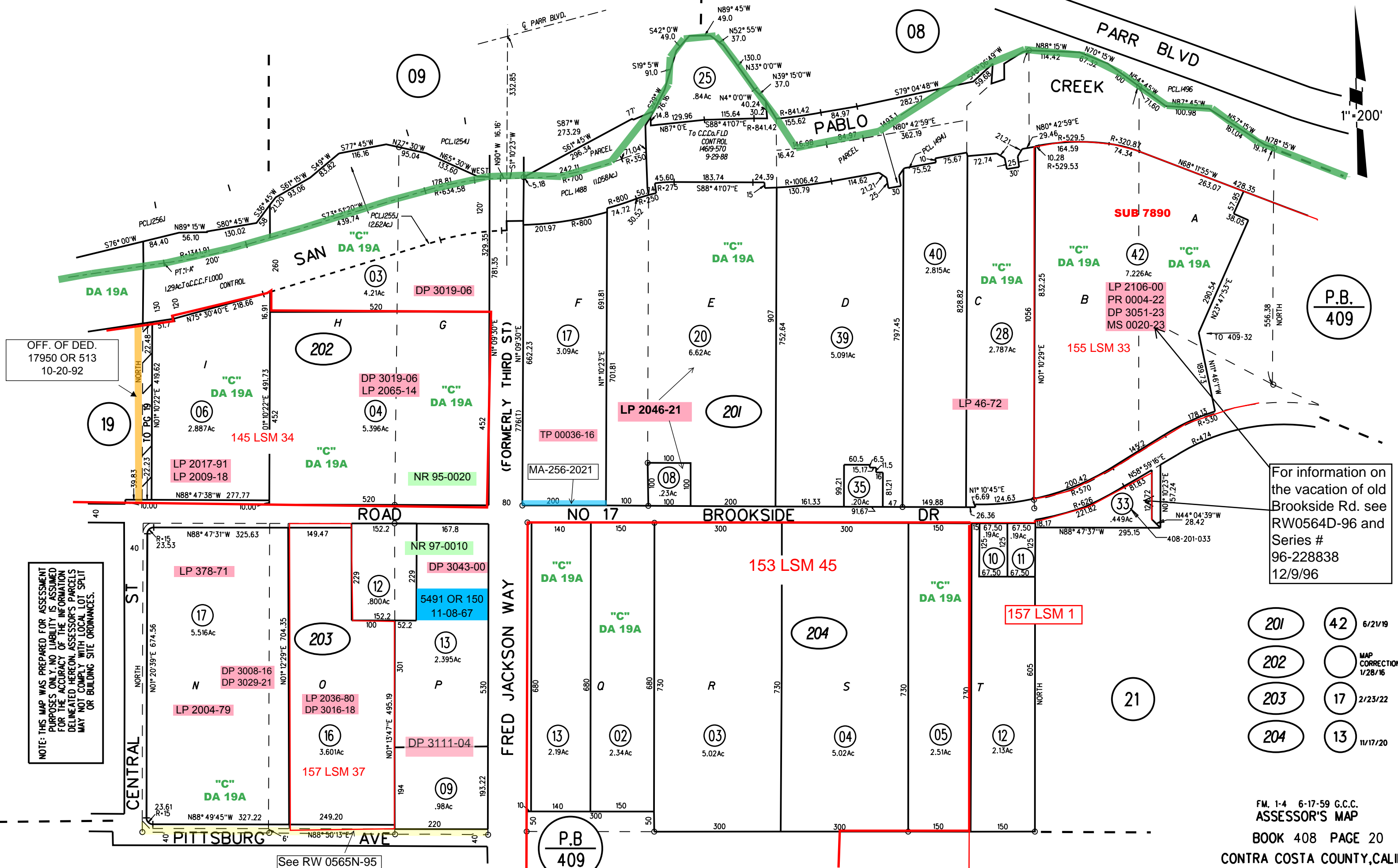


SAMPSON TAMS RANCH MB 1-7

1"=200'



OFF. OF DED.  
17950 OR 513  
10-20-92

NOTE: THIS MAP WAS PREPARED FOR ASSESSMENT PURPOSES ONLY. NO LIABILITY IS ASSUMED FOR THE ACCURACY OF THE INFORMATION DELINEATED HEREON. ASSESSOR'S PARCELS MAY NOT COMPLY WITH LOCAL LOT SPLIT OR BUILDING SITE ORDINANCES.

For information on the vacation of old Brookside Rd. see RW0564D-96 and Series # 96-228838 12/9/96

201	42	6/21/19
202		MAP CORRECTION 1/28/16
203	17	2/23/22
204	13	11/17/20

P.B.  
409

See RW 0565N-95