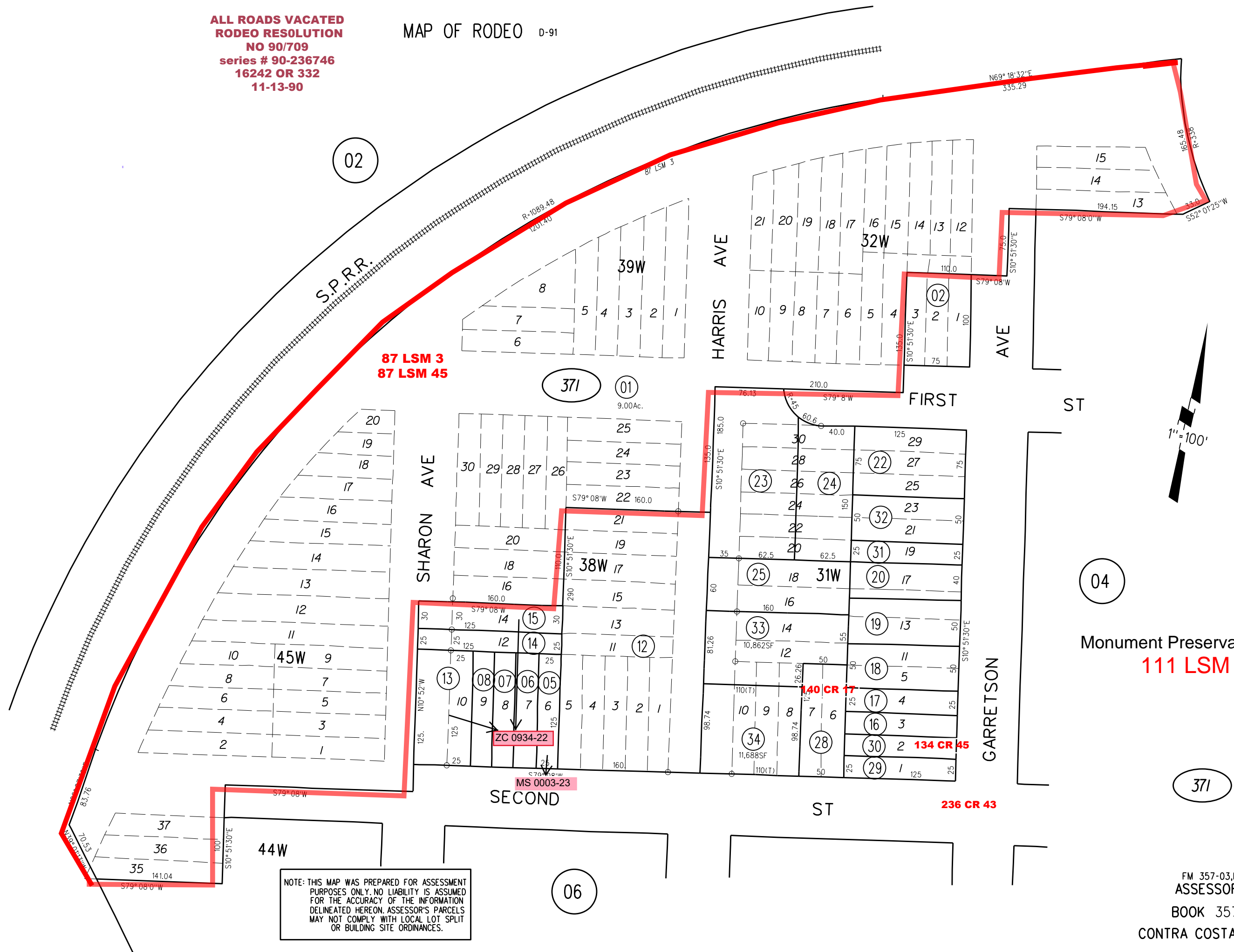


**ALL ROADS VACATED  
RODEO RESOLUTION  
NO 90/709  
series # 90-236746  
16242 OR 332  
11-13-90**

MAP OF RODEO D-91



Monument Preservation Rodeo  
**111 LSM 24**

NOTE: THIS MAP WAS PREPARED FOR ASSESSMENT PURPOSES ONLY. NO LIABILITY IS ASSUMED FOR THE ACCURACY OF THE INFORMATION DELINEATED HEREON. ASSESSOR'S PARCELS MAY NOT COMPLY WITH LOCAL LOT SPLIT OR BUILDING SITE ORDINANCES.