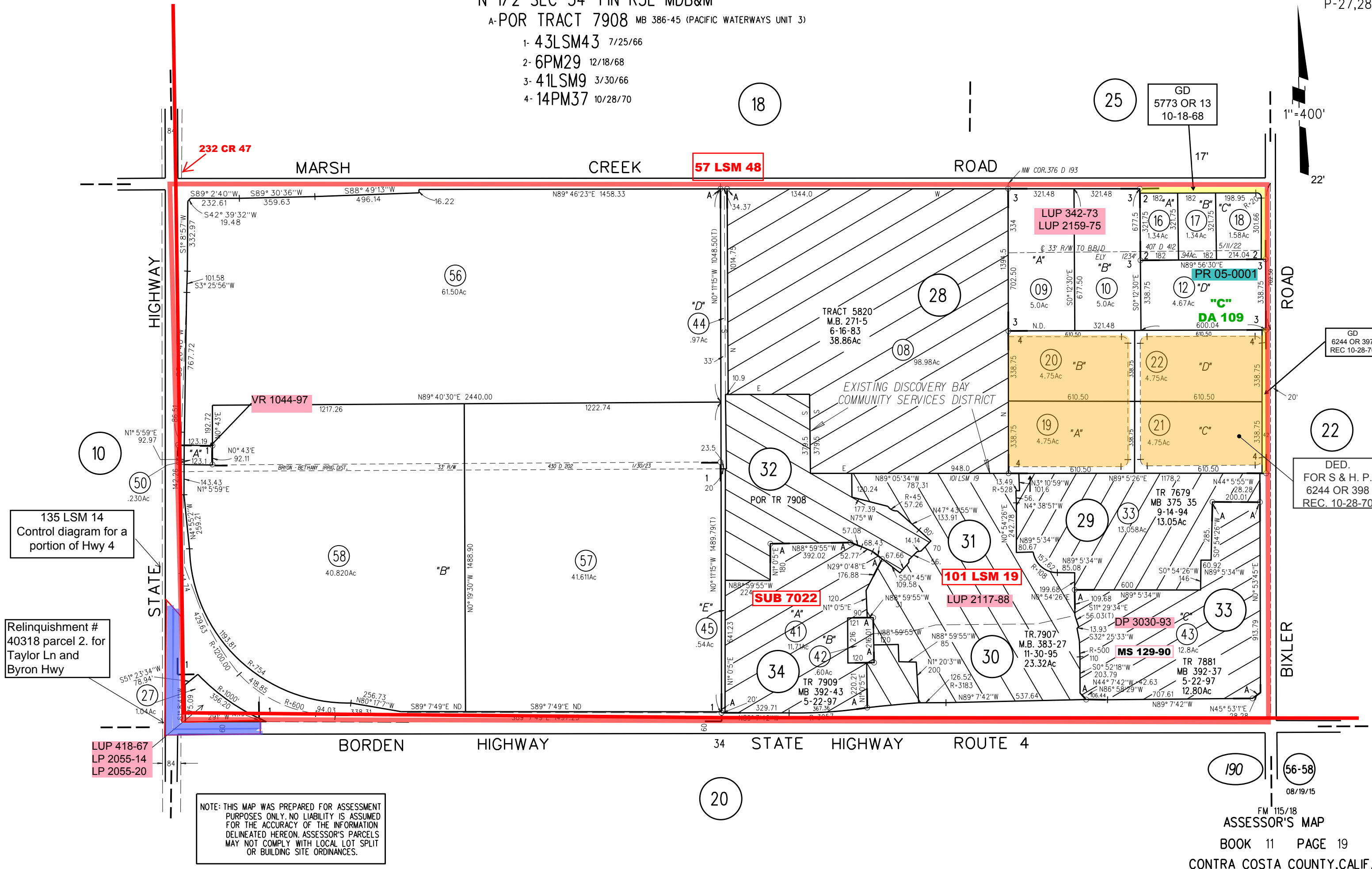
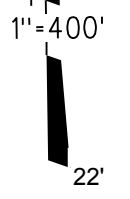


N 1/2 SEC 34 T1N R3E MDB&M  
A-POR TRACT 7908 MB 386-45 (PACIFIC WATERWAYS UNIT 3)

- 1- 43LSM43 7/25/66
- 2- 6PM29 12/18/68
- 3- 41LSM9 3/30/66
- 4- 14PM37 10/28/70



NOTE: THIS MAP WAS PREPARED FOR ASSESSMENT PURPOSES ONLY. NO LIABILITY IS ASSUMED FOR THE ACCURACY OF THE INFORMATION DELINEATED HEREON. ASSESSOR'S PARCELS MAY NOT COMPLY WITH LOCAL LOT SPLIT OR BUILDING SITE ORDINANCES.