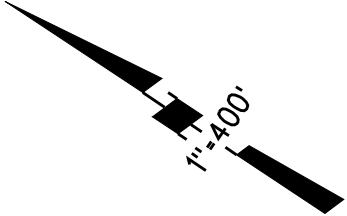
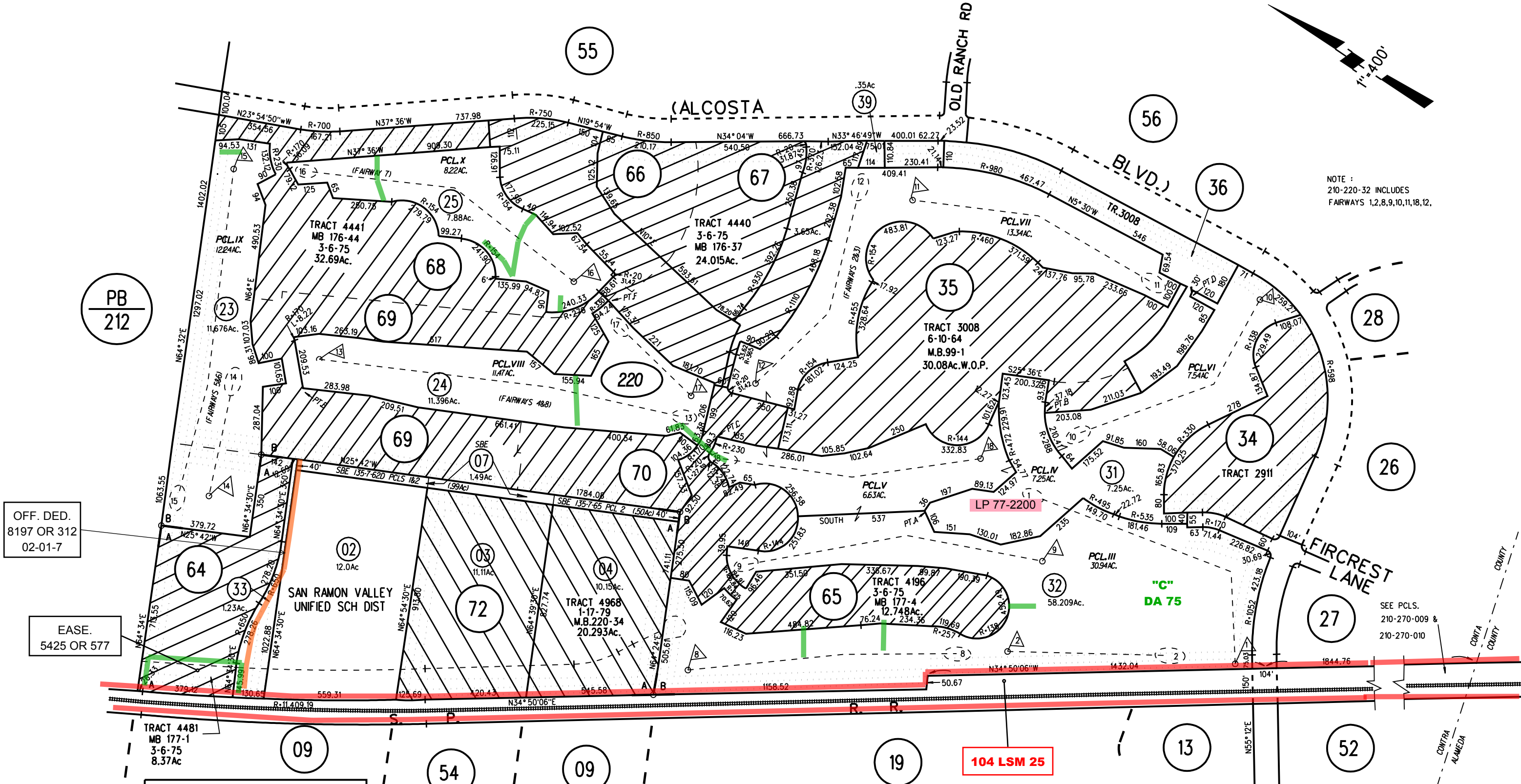


A- POR RANCHO SAN RAMON
 B- POR SAN RAMON COUNTRY CLUB TO 4114 OR 656 5/8/1962

EASE
 7849 OR 832
 05-05-76



NOTE :
 210-220-32 INCLUDES
 FAIRWAYS 1,2,8,9,10,11,18,12.



PB
 212

OFF. DED.
 8197 OR 312
 02-01-7

EASE.
 5425 OR 577

NOTE: THIS MAP WAS PREPARED FOR ASSESSMENT PURPOSES ONLY. NO LIABILITY IS ASSUMED FOR THE ACCURACY OF THE INFORMATION DELINEATED HEREON. ASSESSOR'S PARCELS MAY NOT COMPLY WITH LOCAL LOT SPLIT OR BUILDING SITE ORDINANCES.

SEE PCLs.
 210-270-009 &
 210-270-010

ASSESSOR'S MAP
 BOOK 210 PAGE 22
 CONTRA COSTA COUNTY, CALIF.