

POR. SEC. 28, T.1S., R.1W., M.D.B.M.
 POR. RANCHO SAN RAMON
 A-1977 ROLL TRACT 4659 (SYCAMORE NO. 8) MB 186-7 P.U.D.

P.B.
202

P.B.
216

08 LSM 56
09 LSM 05

QC Deed
6947 OR 544
05-17-73

DP 3011-83

TO FCD
14955 OR 730
03-23-89
CASE 309310

57 LSM 02

6888 OR 805
03-15-73
6865 OR 533
02-15-73
SEE 153M52

OFF. DED.
6276 OR 387
12-01-70
TERMINATED
04-06-72
BY SUB 4221

OFF. DED.
6879 OR 717
03-05-73

SUB 4335
156 M 22

LP 3034-74

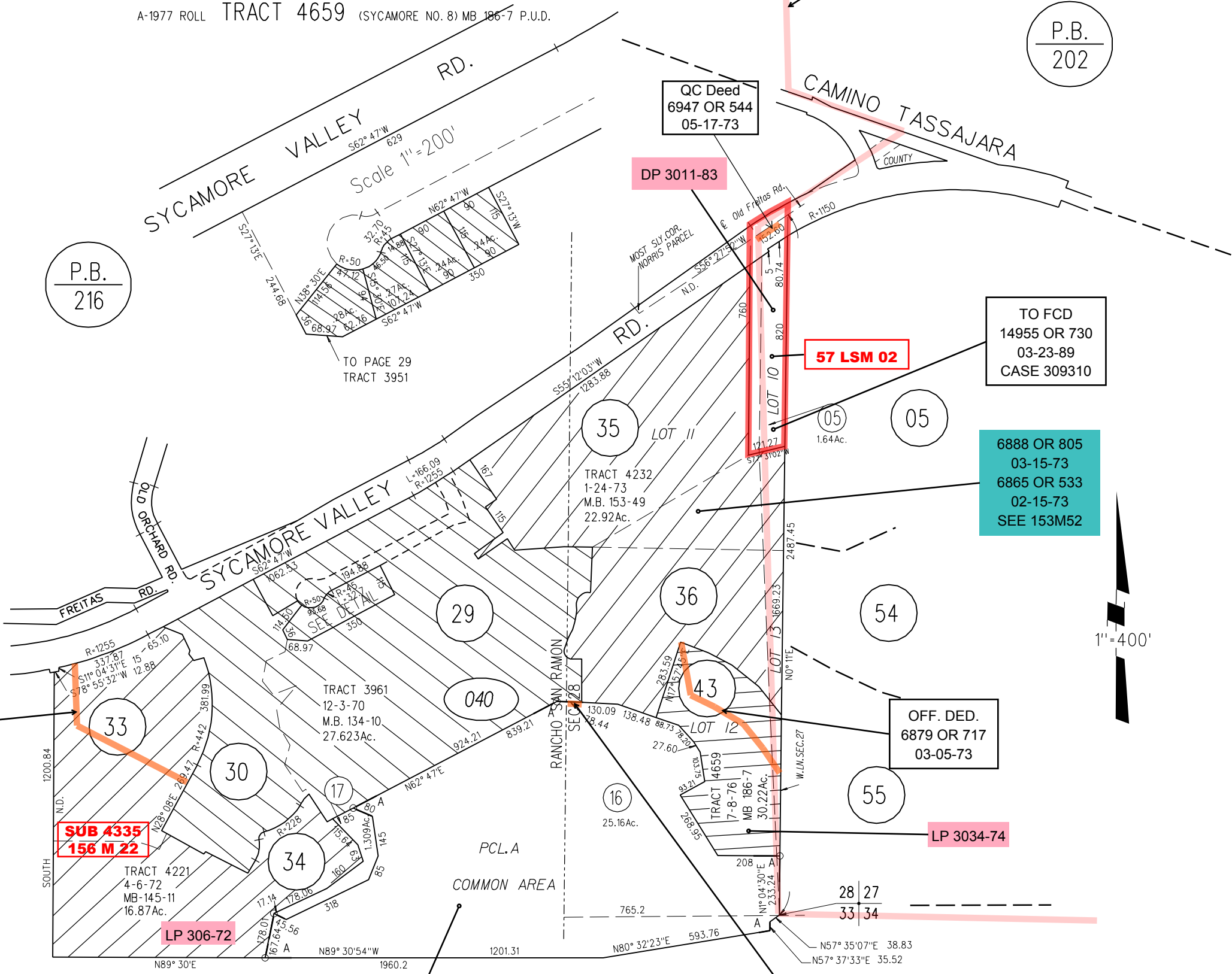
LP 306-72

GD OF DEV. RTS.
7993 OR 771
08-26-76

OFF. DED.
6276 OR 412
12-16-70

NOTE: THIS MAP WAS PREPARED FOR ASSESSMENT PURPOSES ONLY. NO LIABILITY IS ASSUMED FOR THE ACCURACY OF THE INFORMATION DELINEATED HEREON. ASSESSOR'S PARCELS MAY NOT COMPLY WITH LOCAL LOT SPLIT OR BUILDING SITE ORDINANCES.

040



1" = 400'