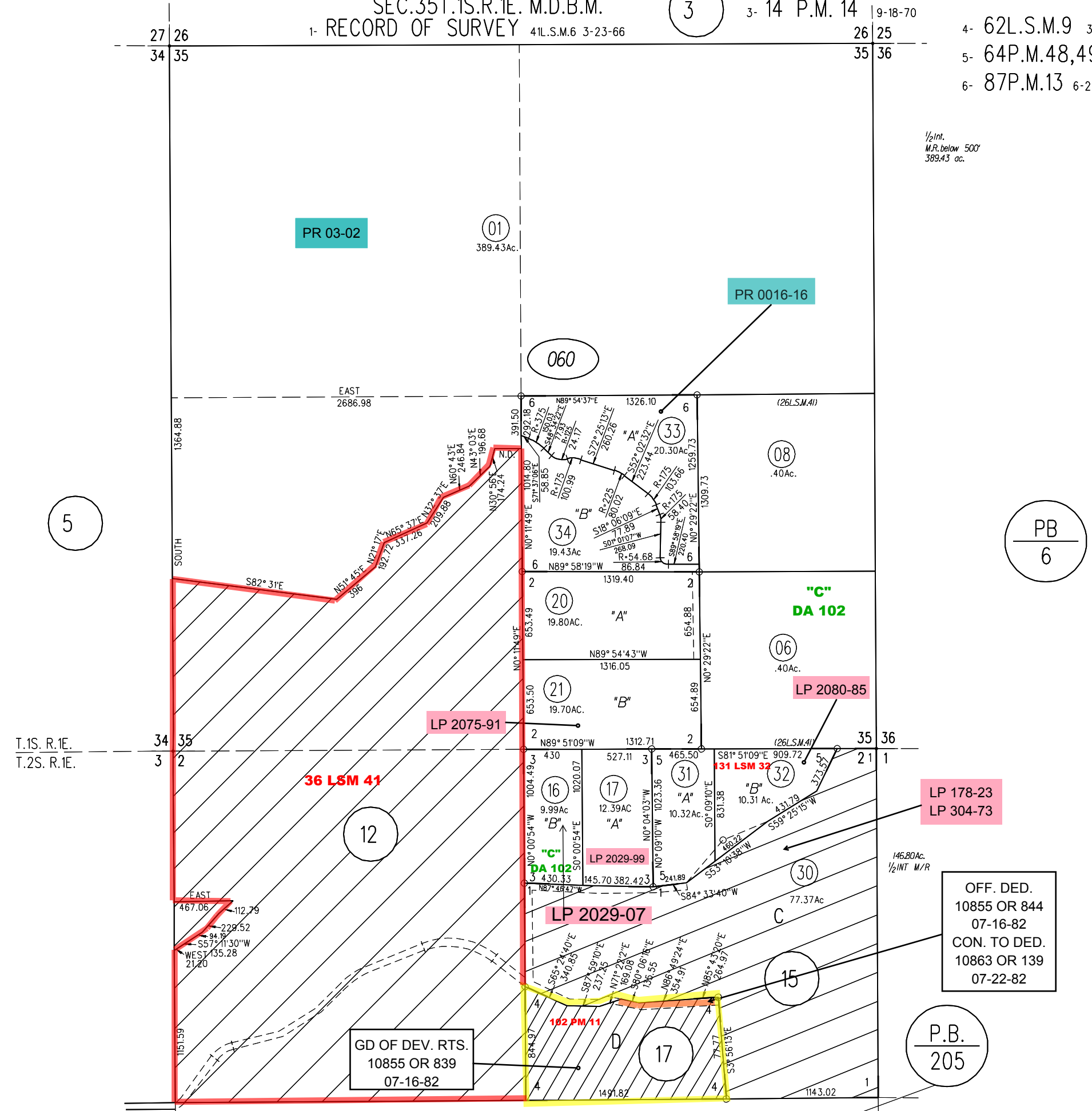


- 4- 62L.S.M.9 3-8-77
- 5- 64P.M.48,49&50 4-17-78
- 6- 87P.M.13 6-27-80

1/2 Int.
M/R. below 500'
369.43 ac.

1"=800'



OFF. DED.
10855 OR 844
07-16-82
CON. TO DED.
10863 OR 139
07-22-82

P.B.
205

060