

RANCHO SAN RAMON Misc. B - 1288-2003
LITINA HOMESTEAD ← 225-0-20
LAURENITA M.B. 52-2
RECORD OF SURVEY 36 L.S.M.24 8-4-65
 1- 89P.M.36&37 9-24-80
 2- 126P.M. 45&46 2-27-87

4- 142PM03 8-29-89

DIA
10018 OR 890
09-24-80

ACC. EASE.
95099218
06-23-95

6602 OR 432
03-27-27

DIA
13477 OR 91
02-27-87

P.B.
187

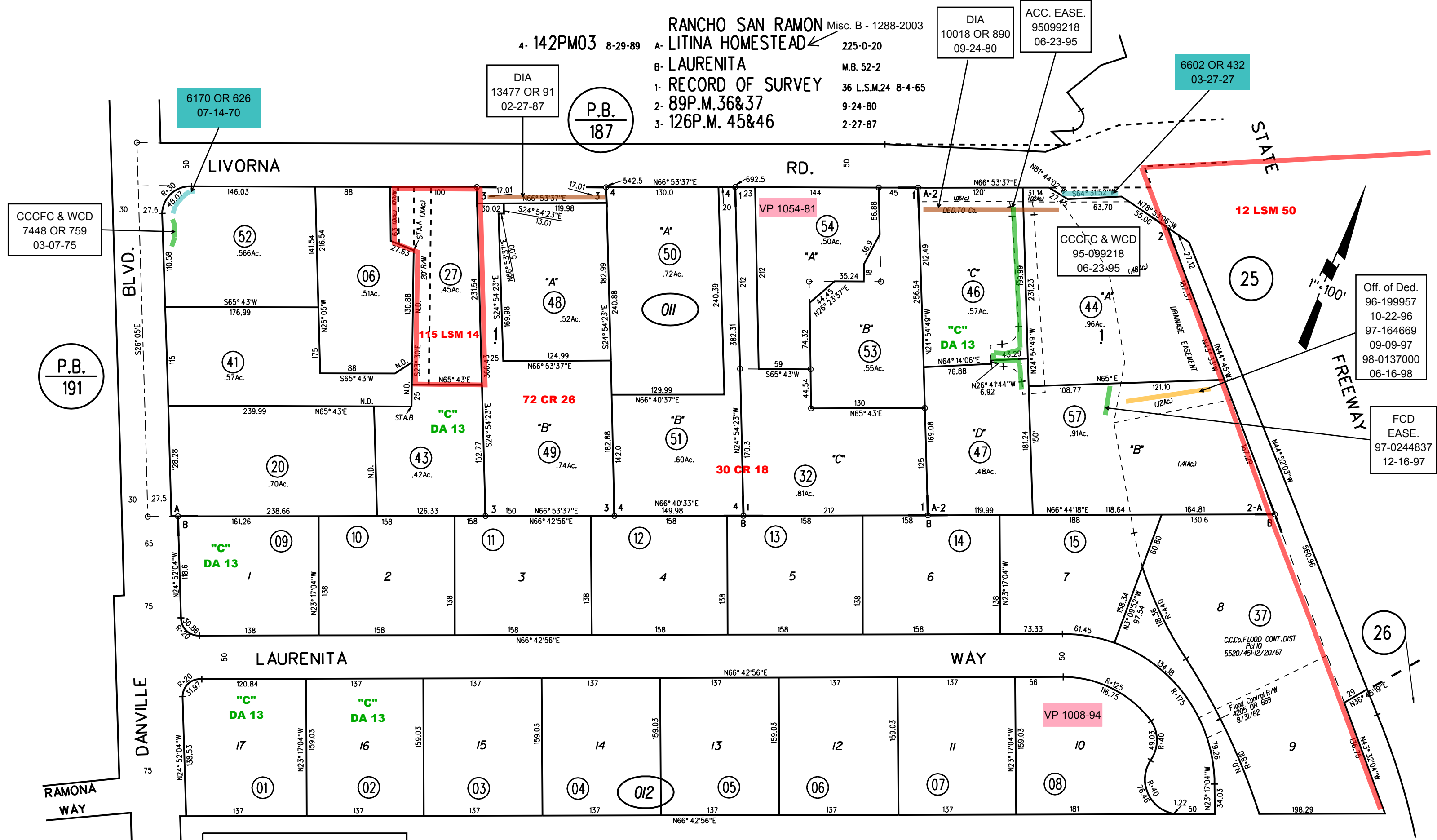
CCCFC & WCD
7448 OR 759
03-07-75

P.B.
191

CCCFC & WCD
95-099218
06-23-95

Off. of Ded.
96-199957
10-22-96
97-164669
09-09-97
98-0137000
06-16-98

FCD EASE.
97-0244837
12-16-97



NOTE: THIS MAP WAS PREPARED FOR ASSESSMENT PURPOSES ONLY. NO LIABILITY IS ASSUMED FOR THE ACCURACY OF THE INFORMATION DELINEATED HEREON. ASSESSOR'S PARCELS MAY NOT COMPLY WITH LOCAL LOT SPLIT OR BUILDING SITE ORDINANCES.

2

O11

O12

4-28-97

(6-74)
ASSESSOR'S MAP

BOOK 192 PAGE 01

FM. 4-13 CONTRA COSTA COUNTY, CALIF.

Sanborn Date : 11/06/1999