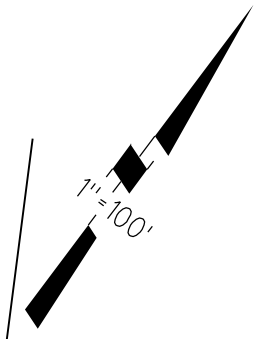


RANCHO SAN RAMON

1-76 P.M. 21 5-2-79

1998 ROLL-A- POR. TRACT 7154 (STONECASTLE ESTATES)

M.B. 396-47



OFF. DED.
15702 OR 514
03-07-90

OFF. DED.
15702 OR 518
09-26-89

EASE.
3138 OR 256
03-21-58

EASE.
4751 OR 415
11-24-64

DIA
9334 OR 931
05-02-79
PART. SATIS.
17037 OR 515
11-25-91

CERT. OF CORR.
98-0028066-00
02-11-98

CON. TO DED.
8813 OR 683
04-28-78

EASE.
97-0244839
12-16-97

OFF. DED.
8813 OR 671
04-28-78

CON. TO DED.
8813 OR 681
04-28-78

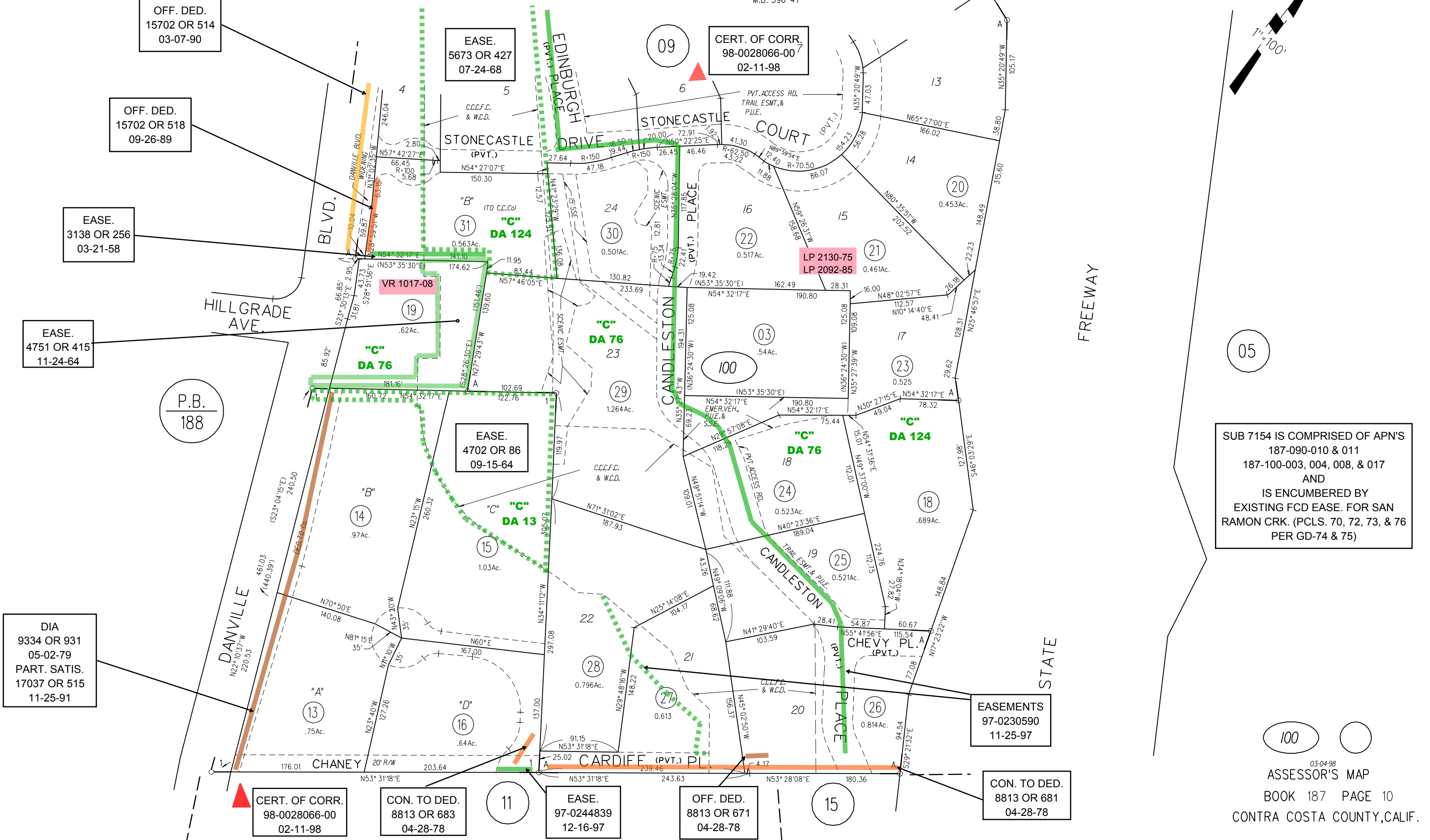
EASE.
5673 OR 427
07-24-68

CERT. OF CORR.
98-0028066-00
02-11-98

EASE.
4702 OR 86
09-15-64

EASEMENTS
97-0230590
11-25-97

SUB 7154 IS COMPRISED OF APN'S
187-090-010 & 011
187-100-003, 004, 008, & 017
AND
IS ENCUMBERED BY
EXISTING FCD EASE. FOR SAN
RAMON CRK. (PCLS. 70, 72, 73, & 76
PER GD-74 & 75)



100