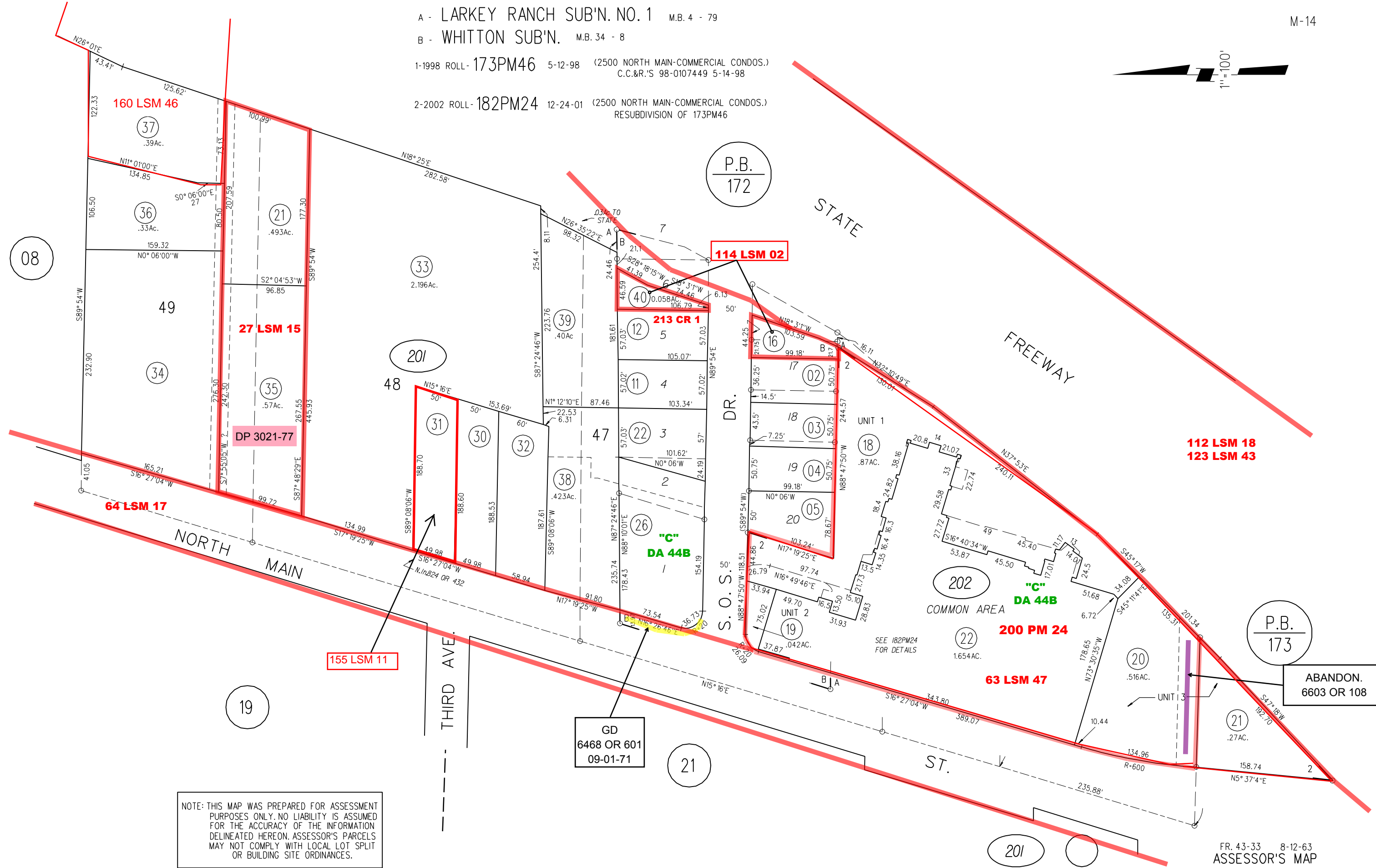
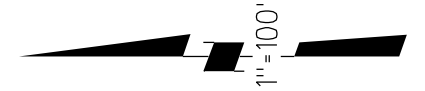


A - LARKEY RANCH SUB'N. NO. 1 M.B. 4 - 79

B - WHITTON SUB'N. M.B. 34 - 8

1-1998 ROLL - 173PM46 5-12-98 (2500 NORTH MAIN-COMMERCIAL CONDOS.)  
C.C.&R.'S 98-0107449 5-14-98

2-2002 ROLL - 182PM24 12-24-01 (2500 NORTH MAIN-COMMERCIAL CONDOS.)  
RESUBDIVISION OF 173PM46



08

P.B.  
172

P.B.  
173

NOTE: THIS MAP WAS PREPARED FOR ASSESSMENT PURPOSES ONLY. NO LIABILITY IS ASSUMED FOR THE ACCURACY OF THE INFORMATION DELINEATED HEREON. ASSESSOR'S PARCELS MAY NOT COMPLY WITH LOCAL LOT SPLIT OR BUILDING SITE ORDINANCES.

201  
202

FR. 43-33 8-12-63  
ASSESSOR'S MAP  
BOOK 171 PAGE 20  
CONTRA COSTA COUNTY, CALIF.