

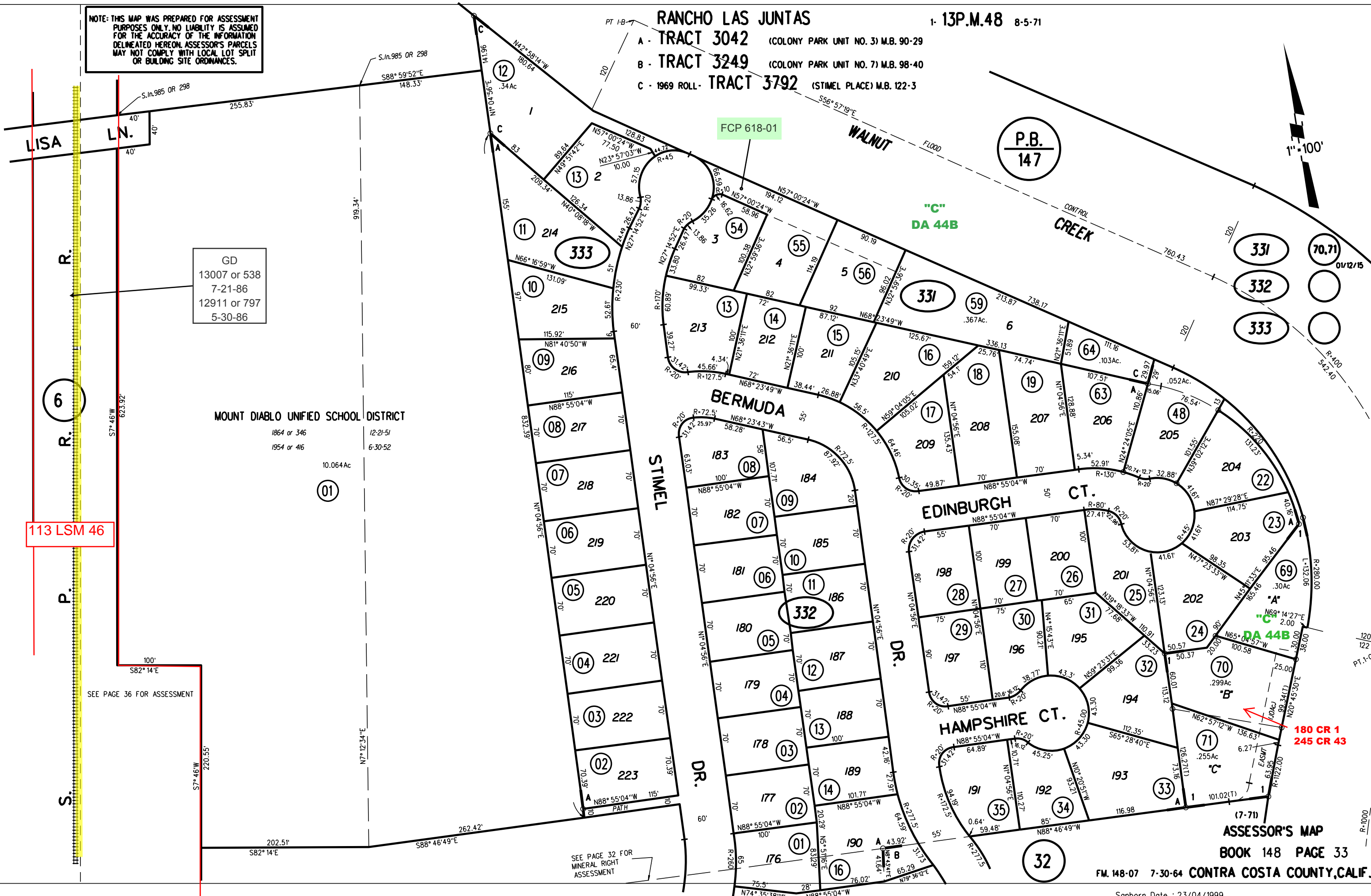
NOTE: THIS MAP WAS PREPARED FOR ASSESSMENT PURPOSES ONLY. NO LIABILITY IS ASSUMED FOR THE ACCURACY OF THE INFORMATION DELINEATED HEREON. ASSESSOR'S PARCELS MAY NOT COMPLY WITH LOCAL LOT SPLIT OR BUILDING SITE ORDINANCES.

# RANCHO LAS JUNTAS

1: 13P.M.48 8-5-71

- A - TRACT 3042 (COLONY PARK UNIT NO. 3) M.B. 90-29
- B - TRACT 3249 (COLONY PARK UNIT NO. 7) M.B. 98-40
- C - 1969 ROLL - TRACT 3792 (STIMEL PLACE) M.B. 122-3

1" = 100'



GD  
13007 or 538  
7-21-86  
12911 or 797  
5-30-86

## MOUNT DIABLO UNIFIED SCHOOL DISTRICT

1864 or 346 12-21-51  
1954 or 416 6-30-52

10.064Ac

113 LSM 46

SEE PAGE 36 FOR ASSESSMENT

SEE PAGE 32 FOR MINERAL RIGHT ASSESSMENT

ASSESSOR'S MAP  
BOOK 148 PAGE 33

FM. 148-07 7-30-64 CONTRA COSTA COUNTY, CALIF.

Sanborn Date : 23/04/1999