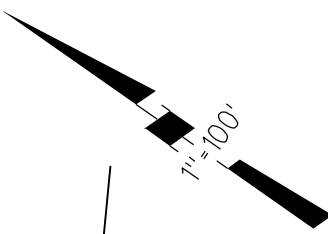
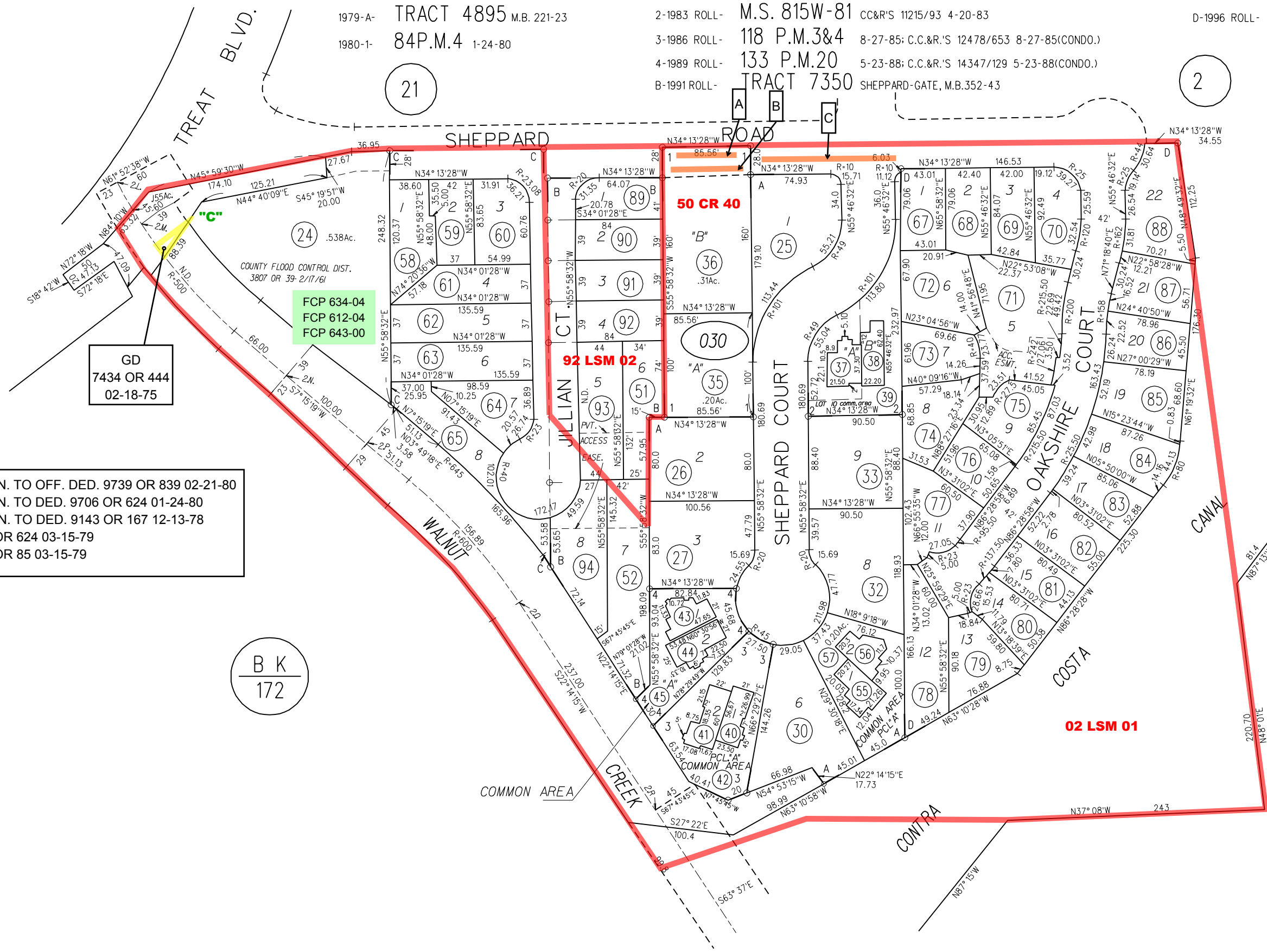


RO SAN MIGUEL (POR LOT 3 VALLEY LAND)

1979-A- TRACT 4895 M.B. 221-23
 1980-1- 84P.M.4 1-24-80

2-1983 ROLL- M.S. 815W-81 CC&R'S 1215/93 4-20-83
 3-1986 ROLL- 118 P.M.3&4
 4-1989 ROLL- 133 P.M.20
 B-1991 ROLL- TRACT 7350 SHEPPARD-GATE, M.B.352-43

C-1996 ROLL- TRACT 7942 M.B. 379-39
 D-1996 ROLL- TRACT 7936 M.B. 381-31 (SHEPPARD OAKS)



A- CON. TO OFF. DED. 9739 OR 839 02-21-80
 B- CON. TO DED. 9706 OR 624 01-24-80
 C- CON. TO DED. 9143 OR 167 12-13-78
 9263 OR 624 03-15-79
 9264 OR 85 03-15-79

B K
 172

NOTE: THIS MAP WAS PREPARED FOR ASSESSMENT PURPOSES ONLY. NO LIABILITY IS ASSUMED FOR THE ACCURACY OF THE INFORMATION DELINEATED HEREON. ASSESSOR'S PARCELS MAY NOT COMPLY WITH LOCAL LOT SPLIT OR BUILDING SITE ORDINANCES.

REVISED	CHANGE	BY
7-29-94	CRE PCLS 55-57	MJ
8-29-95	TR. 7942	RF
11-29-95	TR. 7936	RF
07-27-98	CREATE 089-094	KR

030