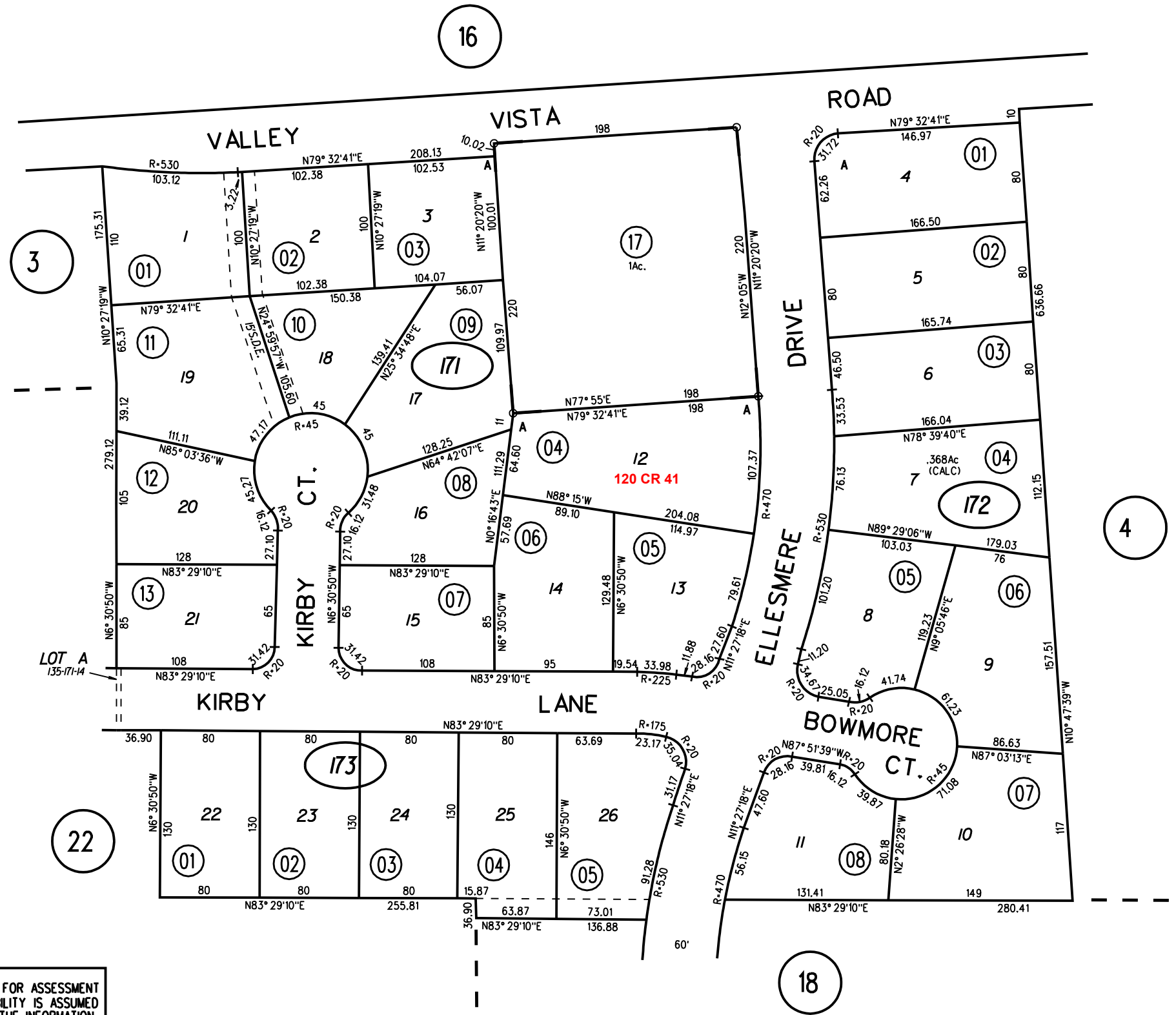


A-1973 ROLL TRACT 4271 (CARRIAGE HILLS NO.1)
RO. SAN MIGUEL



NOTE: THIS MAP WAS PREPARED FOR ASSESSMENT PURPOSES ONLY. NO LIABILITY IS ASSUMED FOR THE ACCURACY OF THE INFORMATION DELINEATED HEREON. ASSESSOR'S PARCELS MAY NOT COMPLY WITH LOCAL LOT SPLIT OR BUILDING SITE ORDINANCES.

- 171
- 172
- 173

1-29-73 FM 135-3,4,6
ASSESSOR'S MAP
BOOK 135 PAGE 17
CONTRA COSTA COUNTY, CALIF.