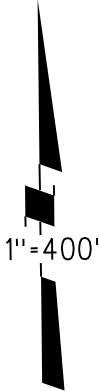
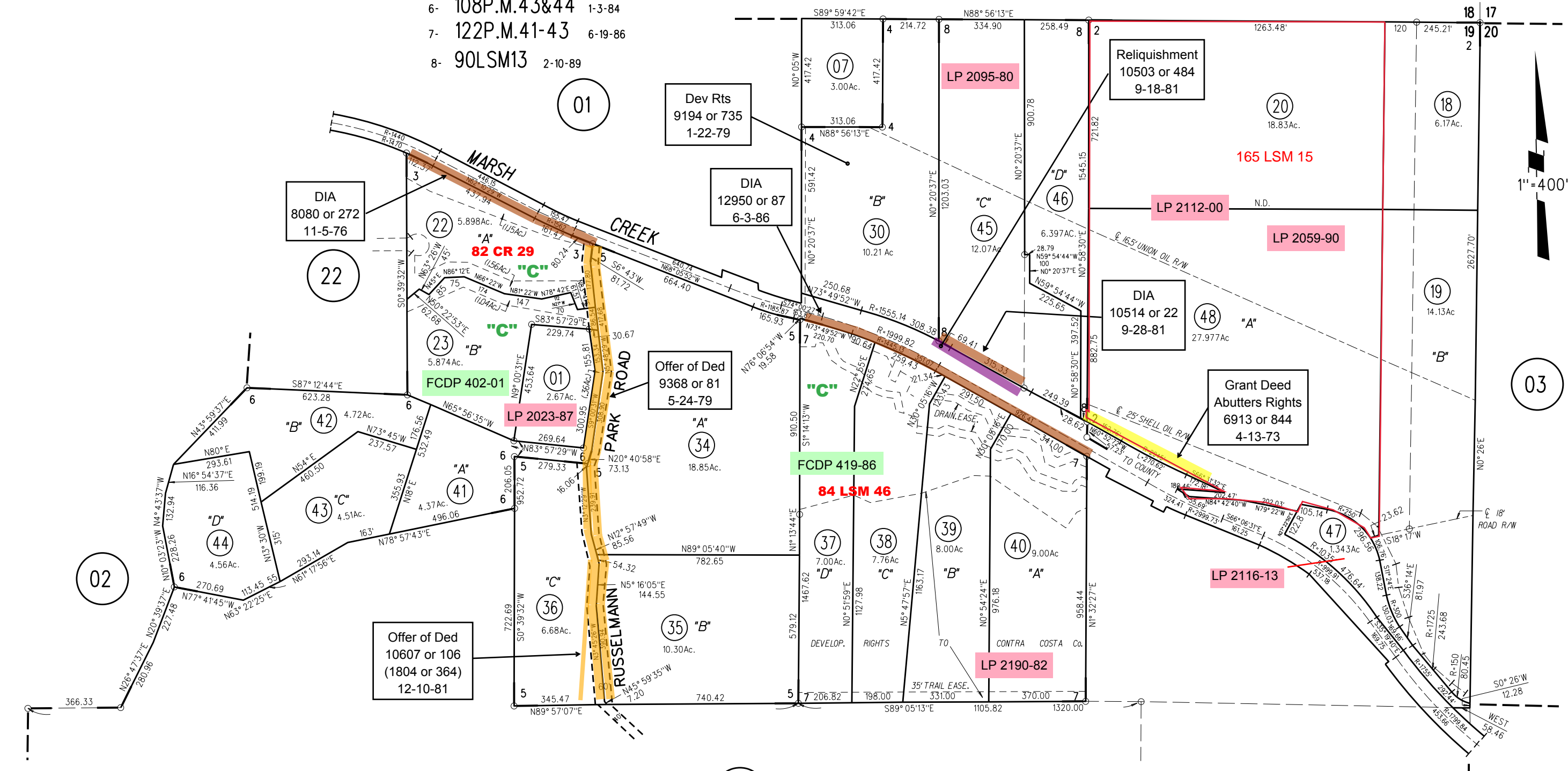


POR. SEC. 19 T.1.N. R.1.E. M.D.B.M.

- 1- 36-L.S.M.-1 7/14/65
- 2- 26P.M.7 1-19-73
- 3- 48P.M.36 THRU 40 9-29-26
- 4- 73P.M.40,41 & 42 1-22-79
- 5- 65L.S.M.43 & 44 5-3-79
- 6- 108P.M.43&44 1-3-84
- 7- 122P.M.41-43 6-19-86
- 8- 90LSM13 2-10-89

P.B.
75



NOTE: THIS MAP WAS PREPARED FOR ASSESSMENT PURPOSES ONLY. NO LIABILITY IS ASSUMED FOR THE ACCURACY OF THE INFORMATION DELINEATED HEREON. ASSESSOR'S PARCELS MAY NOT COMPLY WITH LOCAL LOT SPLIT OR BUILDING SITE ORDINANCES.

27

260 47,48
2/25/16

FM. 78-03 3-27-90
ASSESSOR'S MAP

BOOK 78 PAGE 26

5/31/72 H.B.R. CONTRA COSTA COUNTY, CALIF.

Sborn Date : 02/19/1998