

N.W.1/4 SEC.32 T2N R2E M.D.B.M.

A-1997 ROLL- PCL "C" TR 7999 MB 388-1 (HO SUB UNIT 3 DAYBREAK)

B-1998 ROLL- PCL "A" TR 8025 MB 393-1 (HO SUBUNIT 4 DAYBREAK II)

C-2000 ROLL- POR TR 8216

MB 393-1 (HO PROPERTY UNIT VII)

D-2001 ROLL- PCL A TR 8231

MB 426-10 (HO PROPERTY UNIT 9)

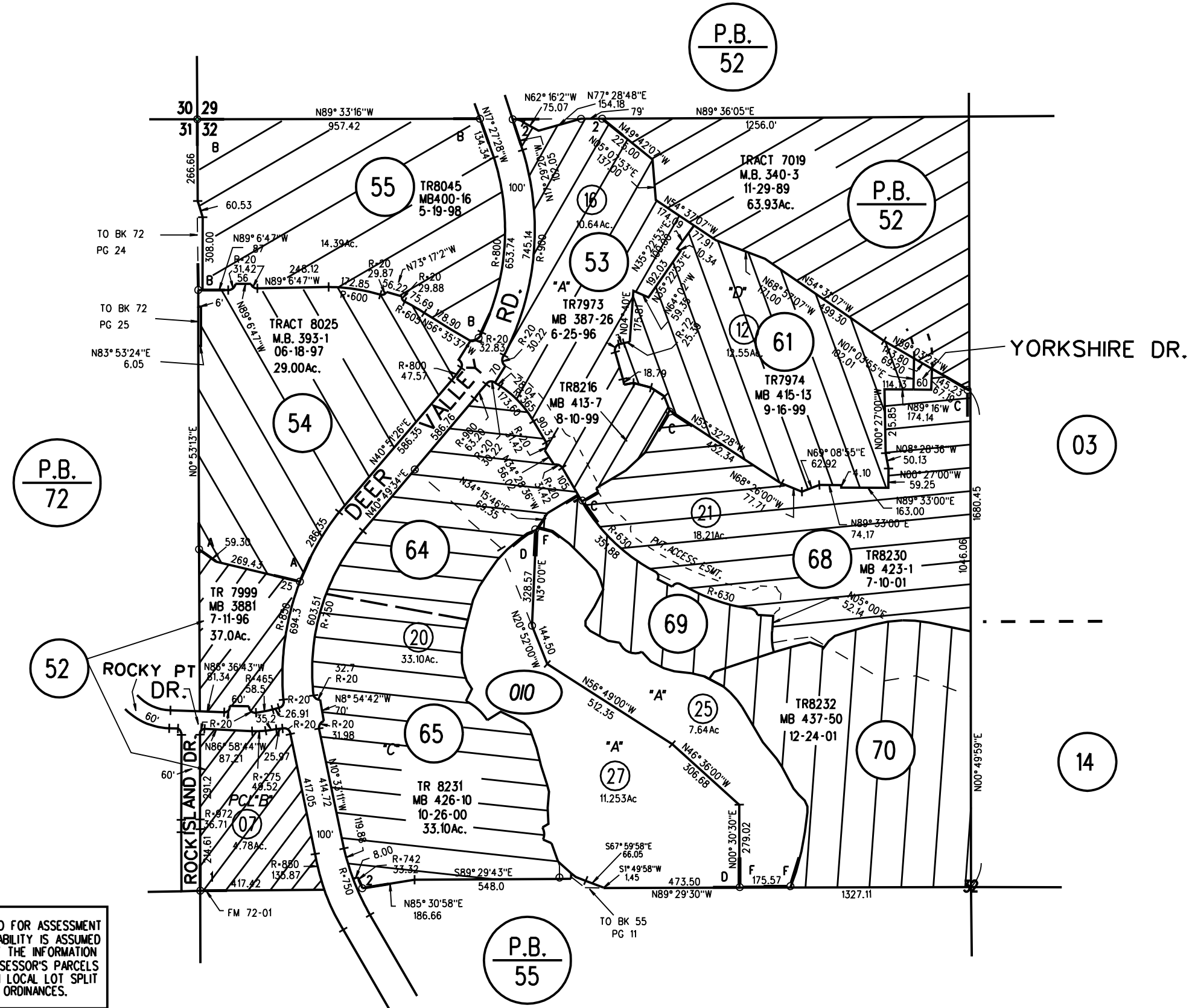
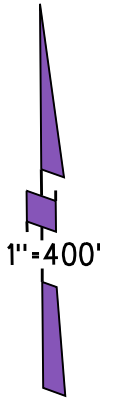
E-2002 ROLL- POR TR 8230

MB 432-1 (HO PROPERTY UNIT 8)

F-2002 ROLL- PCL A TR 8232

MB 437-50 (HO PROPERTY UNIT 10)

2-168PM44 2-26-96



NOTE: THIS MAP WAS PREPARED FOR ASSESSMENT PURPOSES ONLY. NO LIABILITY IS ASSUMED FOR THE ACCURACY OF THE INFORMATION DELINEATED HEREON. ASSESSOR'S PARCELS MAY NOT COMPLY WITH LOCAL LOT SPLIT OR BUILDING SITE ORDINANCES.

010 27 5/24/06