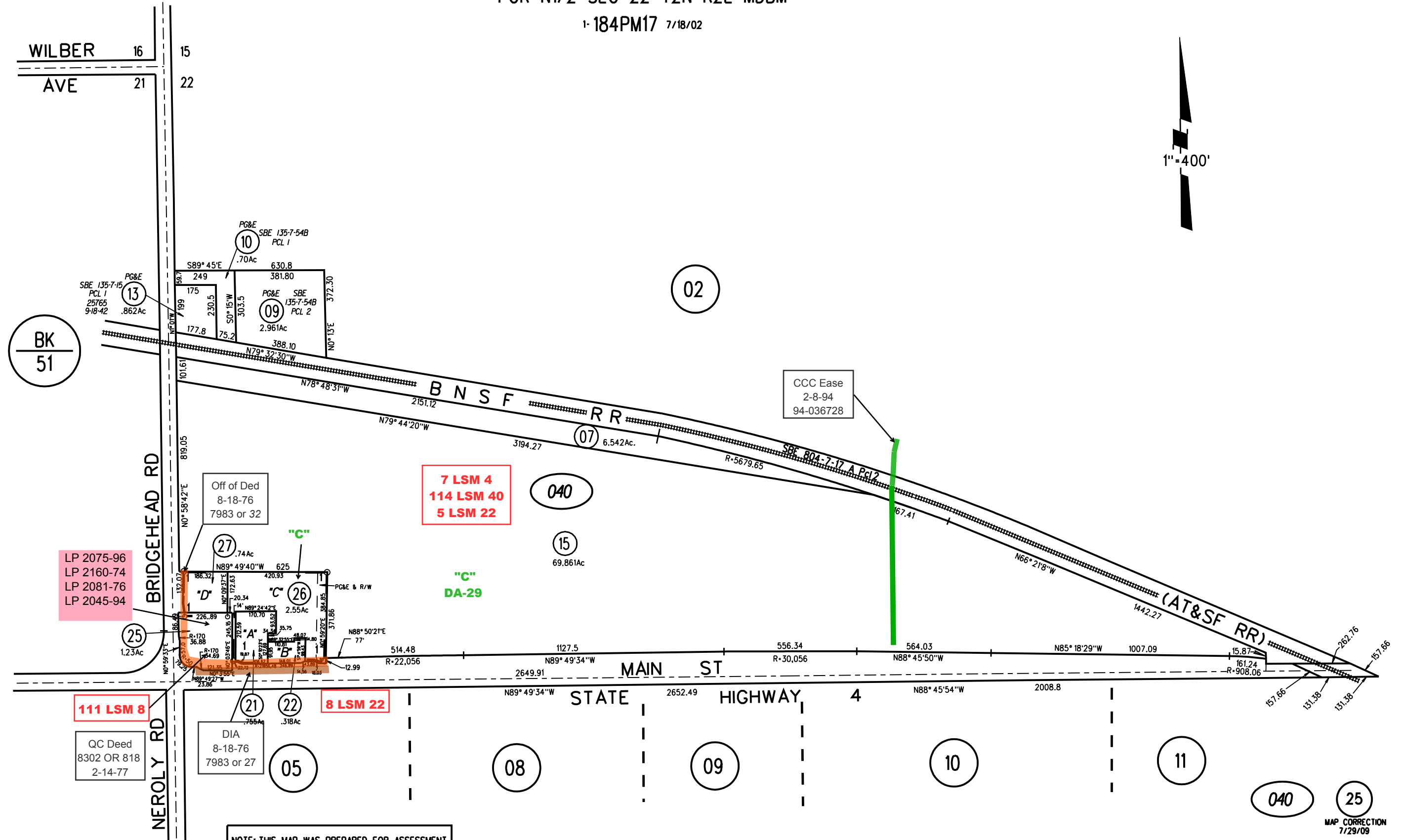
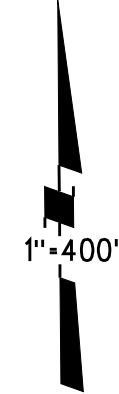


POR N1/2 SEC 22 T2N R2E MDBM

1-184PM17 7/18/02



LP 2075-96
LP 2160-74
LP 2081-76
LP 2045-94

7 LSM 4
114 LSM 40
5 LSM 22

111 LSM 8
QC Deed
8302 OR 818
2-14-77

DIA
8-18-76
7983 or 27

NOTE: THIS MAP WAS PREPARED FOR ASSESSMENT PURPOSES ONLY. NO LIABILITY IS ASSUMED FOR THE ACCURACY OF THE INFORMATION DELINEATED HEREON. ASSESSOR'S PARCELS MAY NOT COMPLY WITH LOCAL LOT SPLIT OR BUILDING SITE ORDINANCES.