

POR NW 1/4 SEC 26 T2N R2E MDBM

- 1- 60PM15 11/18/77
- 2- 86PM12 5/9/80
- A- TRACT 7045 MB 333-4 5/1

OFF. DED. FOR RDWY
6708 OR 23
7-26-72

GD
7585 OR 598
8-7-75

TEMP. ACCESS. RTS.
10493 OR 858
9-17-81
EXT. OF ACCESS RTS.
10819 OR 39
6-18-82

DIA SATIS.
95-170335
10-9-95
95-170340

DIA SATIS.
95-170341
10-9-95
95-170336

GD
8598 OR 434
11-18-77

DIA
9846 OR 670
5-6-80

DIA
15060 OR 422
5-11-89

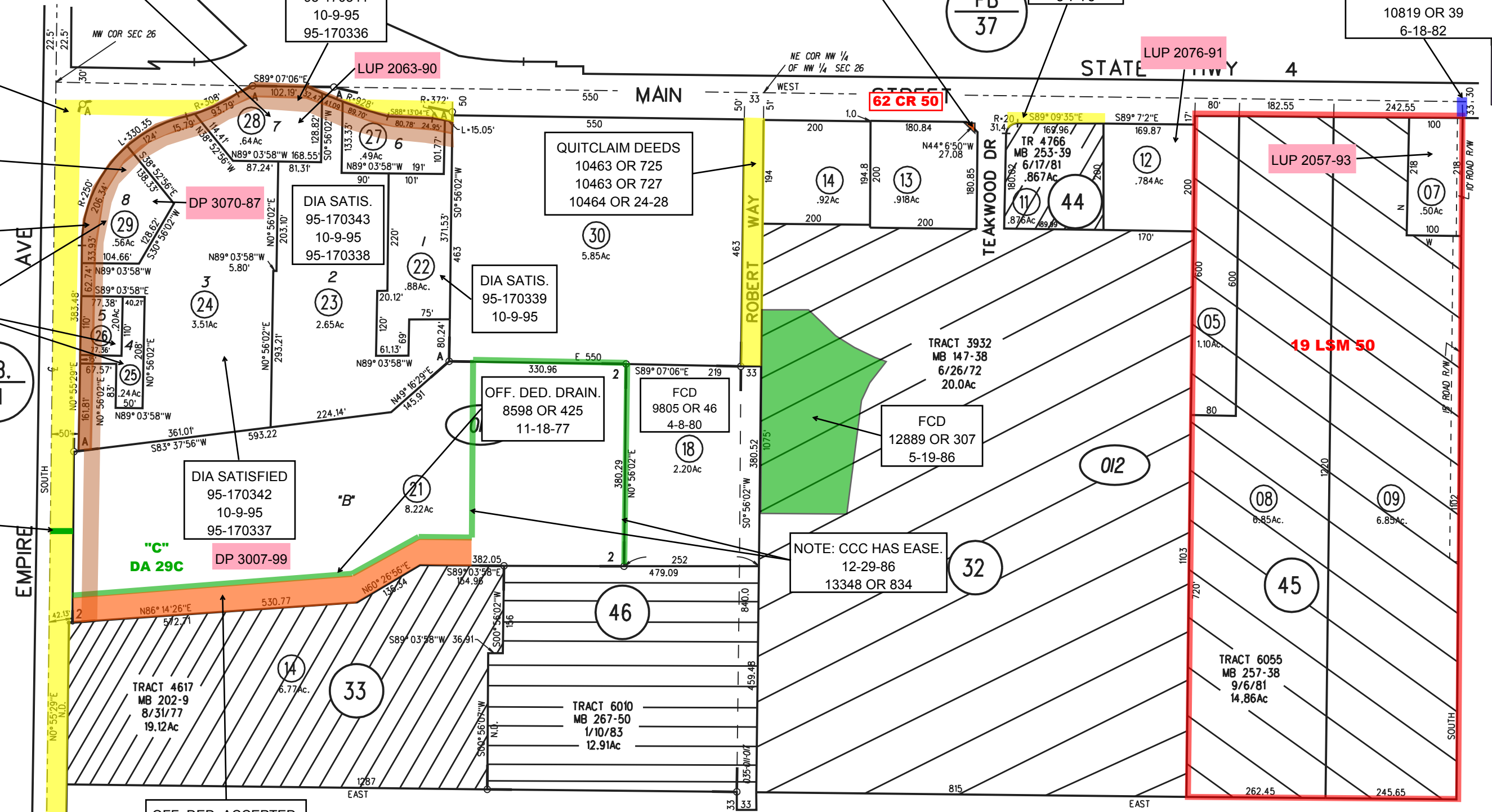
DIA SATISFIED
95-70344
10-9-95
95-170339

DRAIN RELEASE
8598 OR 421
11-18-77

DIA SATISFIED
95-170342
10-9-95
95-170337

OFF. DED. ACCEPTED.
13348 OR 834
12-29-86
SU 35-011-021
OFF. DED.
8598 OR 425
11-18-77

MAP WAS PREPARED FOR ASSESSMENT
POSES ONLY. NO LIABILITY IS ASSUMED
THE ACCURACY OF THE INFORMATION
DELINEATED HEREON, ASSESSOR'S PARCELS
MAY NOT COMPLY WITH LOCAL LOT SPLIT
OR BUILDING SITE ORDINANCES.



P.B.
41

PB
37

42

46

53

011
012

45