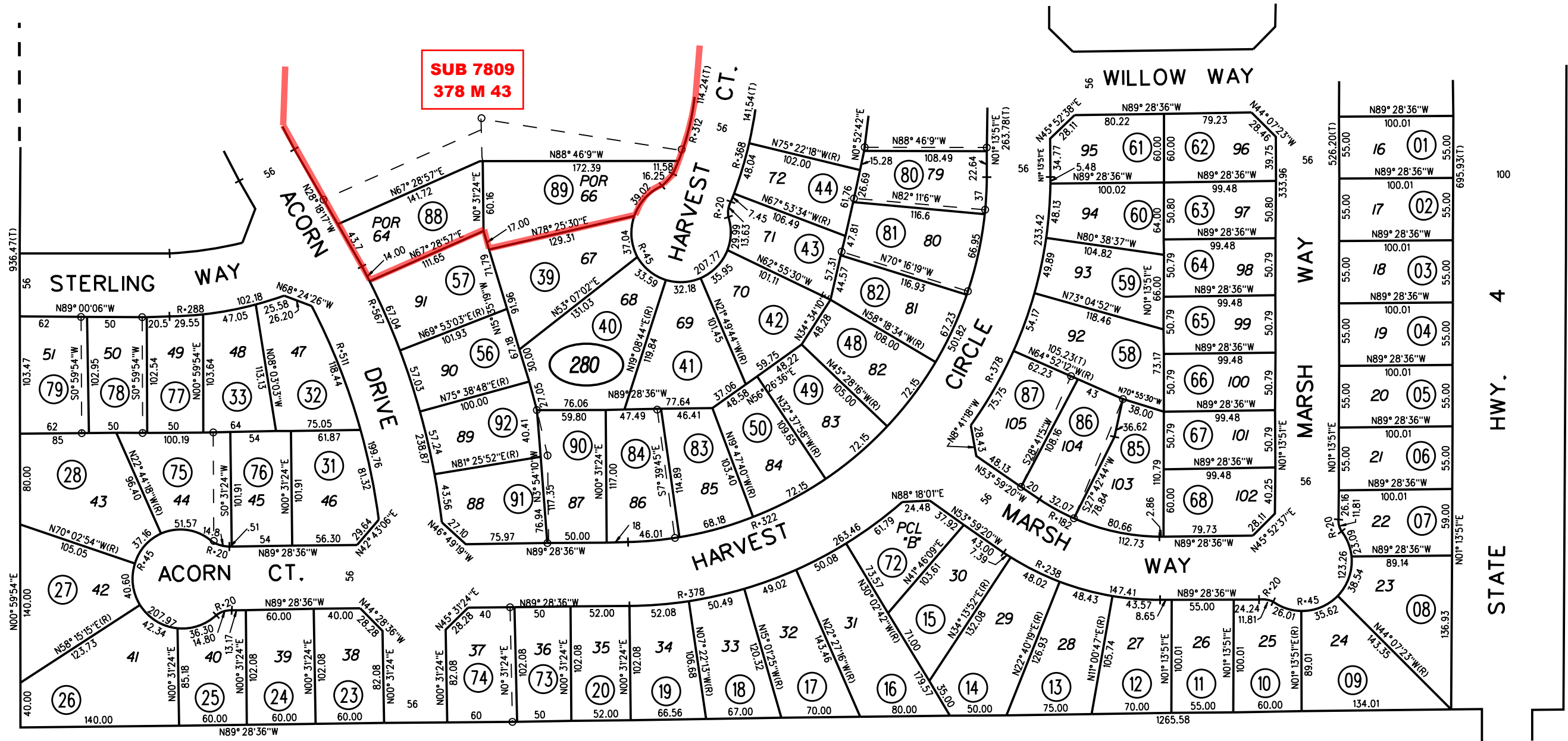


27

**SUB 7809  
378 M 43**



26

P. B.  
33

26

280

REVISED	CHANGE	BY
3-6-95	LLA'S PCL 73-87	MJ
6-29-95	LLA'S PCL 88,89	MJ
10-04-96	LLA 090-092	KR

Sanborn Date : 04/11/1999  
 FM, PG. 26 11-2-90  
**ASSESSOR'S MAP**  
 BOOK 34 PAGE 28  
 CONTRA COSTA COUNTY, CALIF.