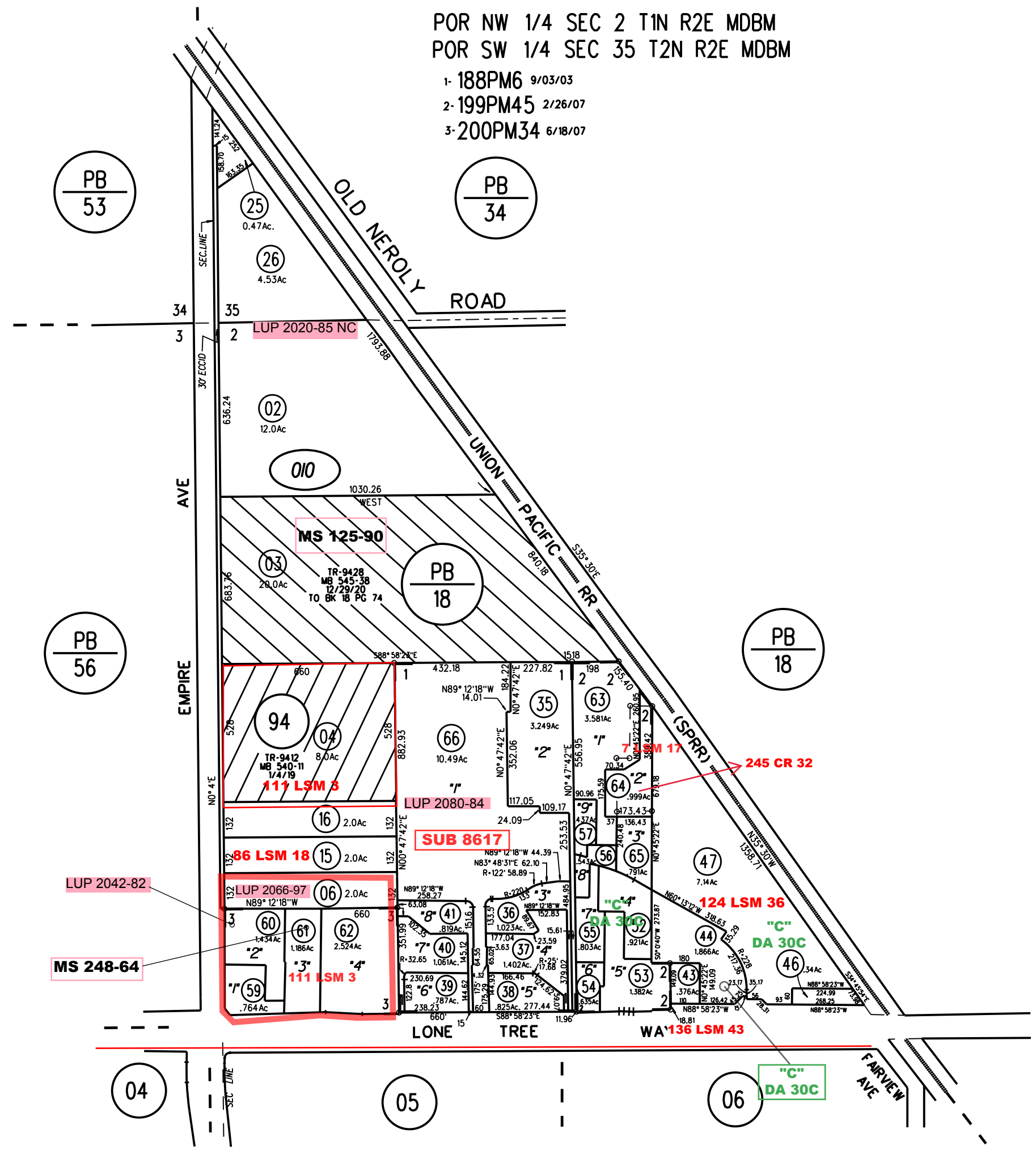
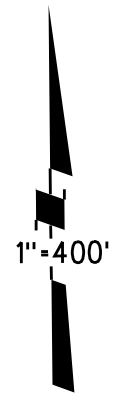


POR NW 1/4 SEC 2 T1N R2E MDBM
POR SW 1/4 SEC 35 T2N R2E MDBM

- 1- 188PM6 9/03/03
- 2- 199PM45 2/26/07
- 3- 200PM34 6/18/07



NOTE: THIS MAP WAS PREPARED FOR ASSESSMENT PURPOSES ONLY. NO LIABILITY IS ASSUMED FOR THE ACCURACY OF THE INFORMATION DELINEATED HEREON. ASSESSOR'S PARCELS MAY NOT COMPLY WITH LOCAL LOT SPLIT OR BUILDING SITE ORDINANCES.

OIO TR 9428 2/10/21