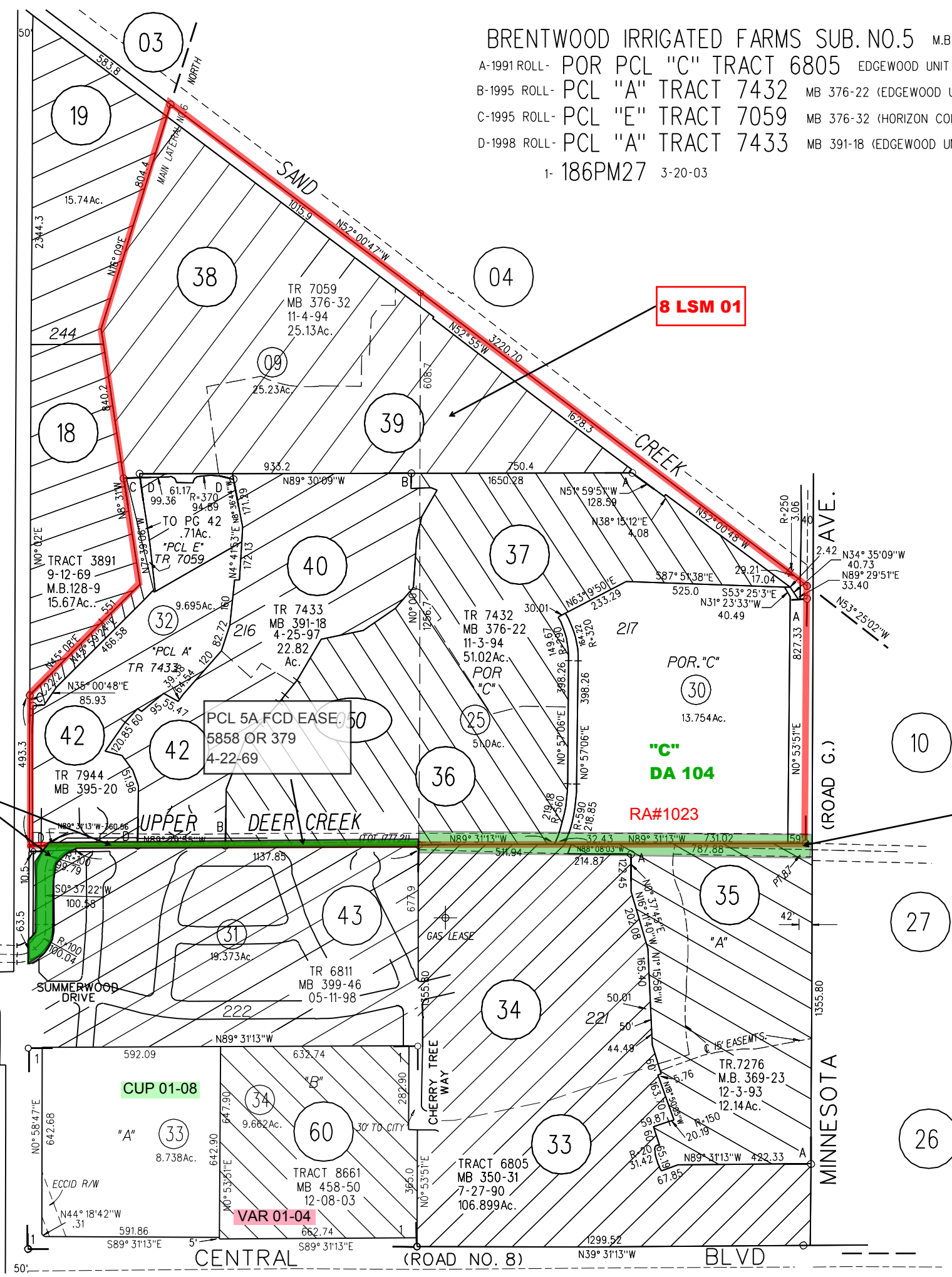
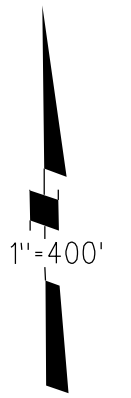


BRENTWOOD IRRIGATED FARMS SUB. NO.5 M.B. 17-372
 A-1991 ROLL- POR PCL "C" TRACT 6805 EDGEWOOD UNIT 1, M.B. 350-31
 B-1995 ROLL- PCL "A" TRACT 7432 MB 376-22 (EDGEWOOD UNIT 3)
 C-1995 ROLL- PCL "E" TRACT 7059 MB 376-32 (HORIZON COLLECTION AT SAND CREEK UNIT 1)
 D-1998 ROLL- PCL "A" TRACT 7433 MB 391-18 (EDGEWOOD UNIT 4)
 1- 186PM27 3-20-03



PCL 7 FEE CONTINENTE
 TO CCCFC & WCD 5386
 OR 166 6-9-67

DRAIN. EASE. OFF. OF DED.
 TO CCCFC & WCD FROM
 BRENTWOOD UNION
 SCHOOL DIST. 9-19-94
 94-2293-49

PB
 19

PB
 12

NOTE: THIS MAP WAS PREPARED FOR ASSESSMENT
 PURPOSES ONLY. NO LIABILITY IS ASSUMED
 FOR THE ACCURACY OF THE INFORMATION
 DELINEATED HEREON. ASSESSOR'S PARCELS
 MAY NOT COMPLY WITH LOCAL LOT SPLIT
 OR BUILDING SITE ORDINANCES.

050 TR
 8661
 12/23/03