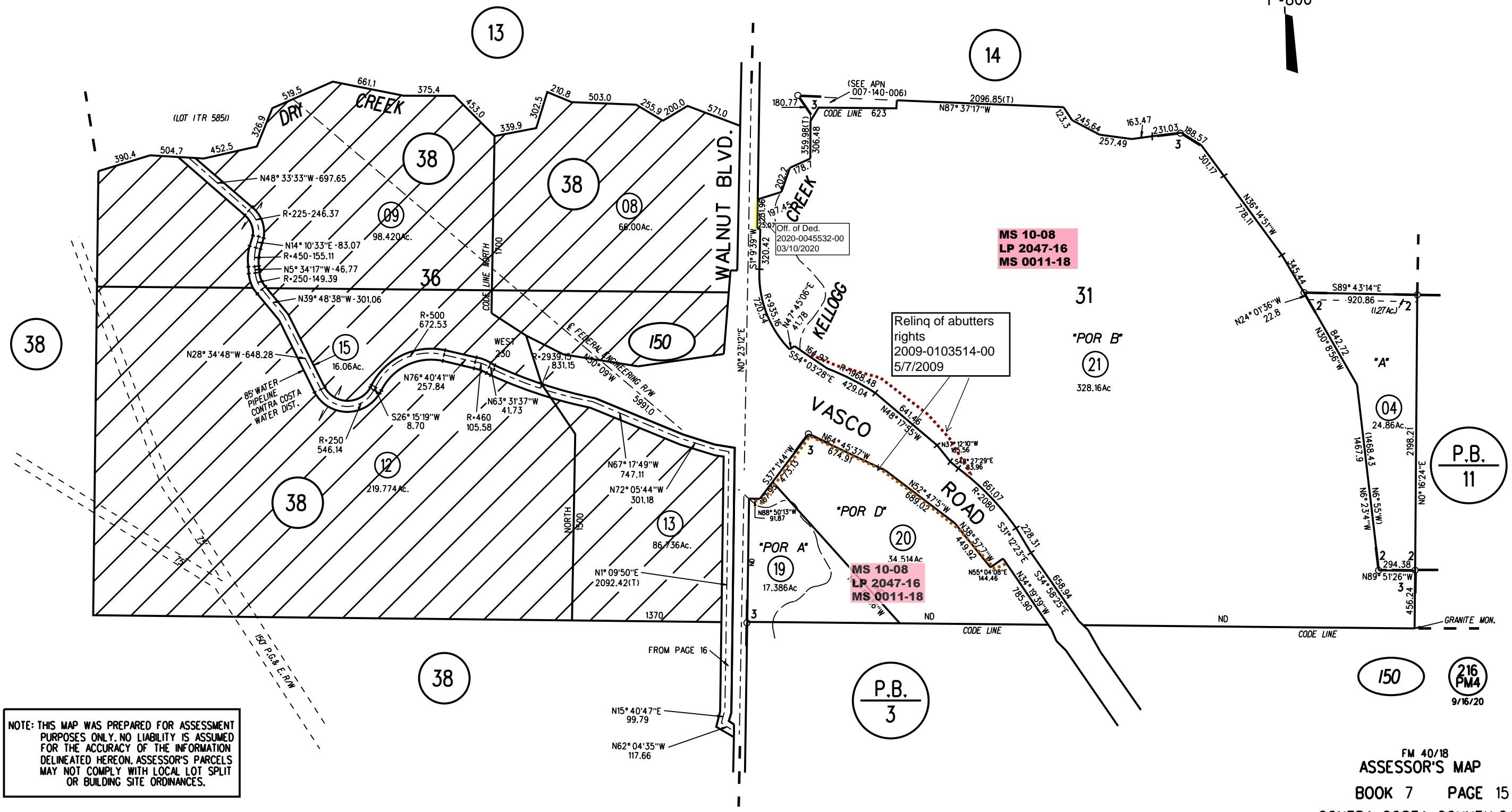
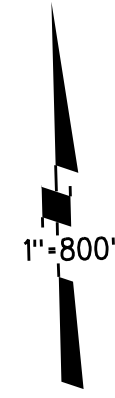


POR SEC 36 T1N R2E MDBM
 POR SEC 31 T1N R3E MDBM
 2-POR 65PM39 5-9-78
 3-POR 216PM4 3-10-20



MS 10-08
LP 2047-16
MS 0011-18

Reling of abutters
 rights
 2009-0103514-00
 5/7/2009

MS 10-08
LP 2047-16
MS 0011-18

NOTE: THIS MAP WAS PREPARED FOR ASSESSMENT PURPOSES ONLY. NO LIABILITY IS ASSUMED FOR THE ACCURACY OF THE INFORMATION DELINEATED HEREON. ASSESSOR'S PARCELS MAY NOT COMPLY WITH LOCAL LOT SPLIT OR BUILDING SITE ORDINANCES.