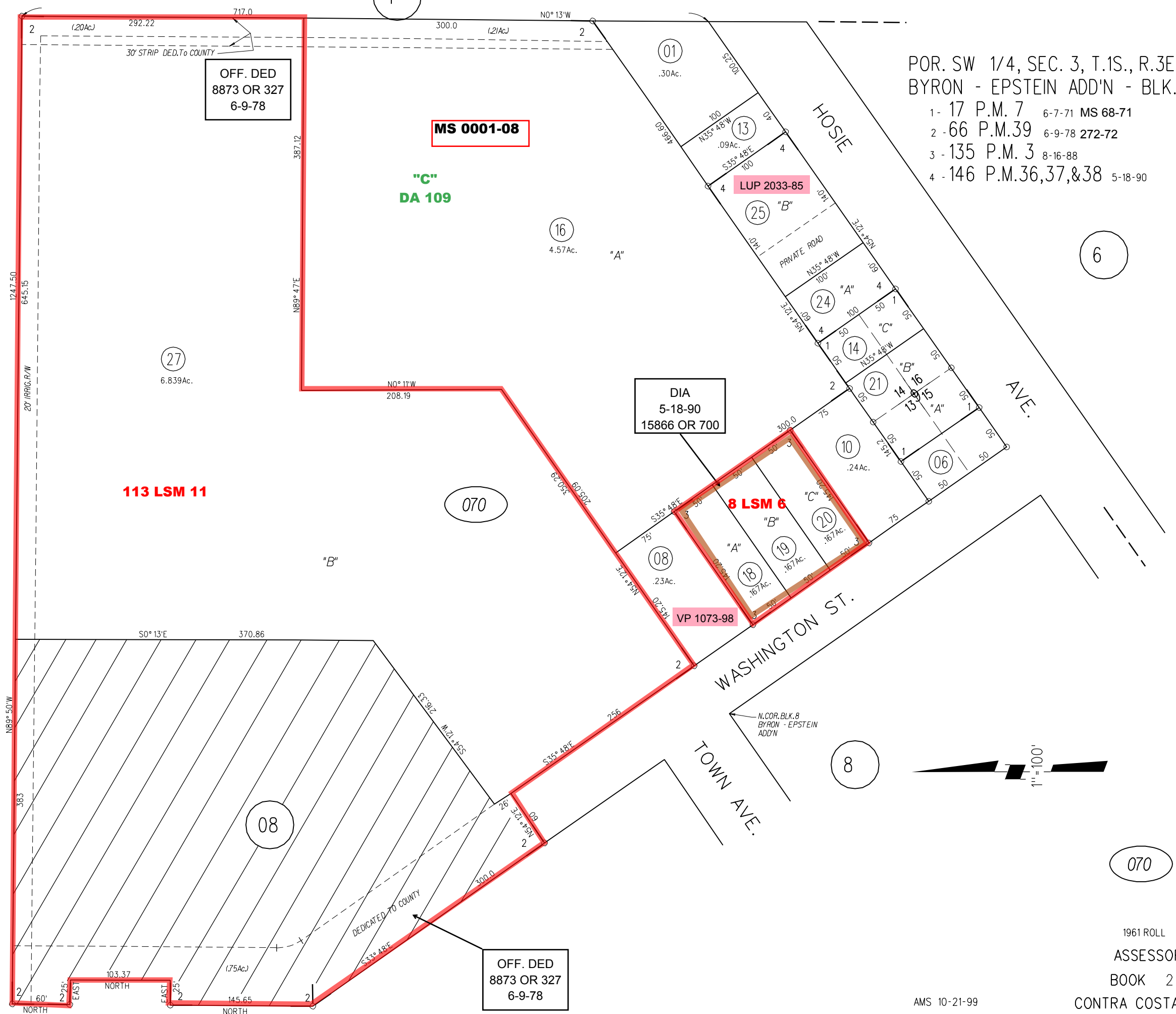


POR. SW 1/4, SEC. 3, T.1S., R.3E., M.D.B.&M
 BYRON - EPSTEIN ADD'N - BLK. 9

- 1 - 17 P.M. 7 6-7-71 MS 68-71
- 2 - 66 P.M.39 6-9-78 272-72
- 3 - 135 P.M. 3 8-16-88
- 4 - 146 P.M.36,37,&38 5-18-90



OFF. DED
 8873 OR 327
 6-9-78

MS 0001-08

"C"
 DA 109

DIA
 5-18-90
 15866 OR 700

8 LSM 6

VP 1073-98

OFF. DED
 8873 OR 327
 6-9-78

113 LSM 11

NOTE: THIS MAP WAS PREPARED FOR ASSESSMENT PURPOSES ONLY. NO LIABILITY IS ASSUMED FOR THE ACCURACY OF THE INFORMATION DELINEATED HEREON. ASSESSOR'S PARCELS MAY NOT COMPLY WITH LOCAL LOT SPLIT OR BUILDING SITE ORDINANCES.

AMS 10-21-99

1961 ROLL 116/40
 ASSESSOR'S MAP
 BOOK 2 PAGE 07
 CONTRA COSTA COUNTY,CALIF.