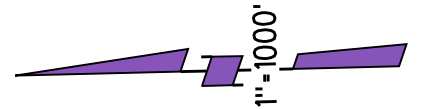
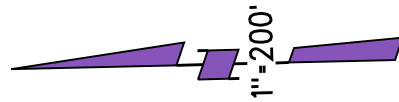
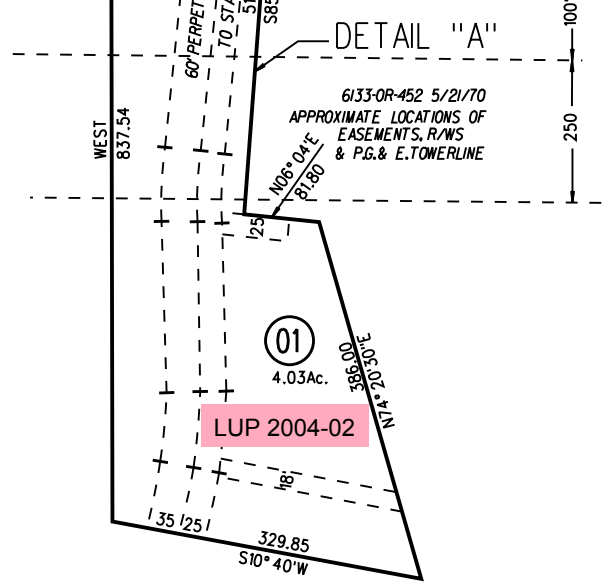
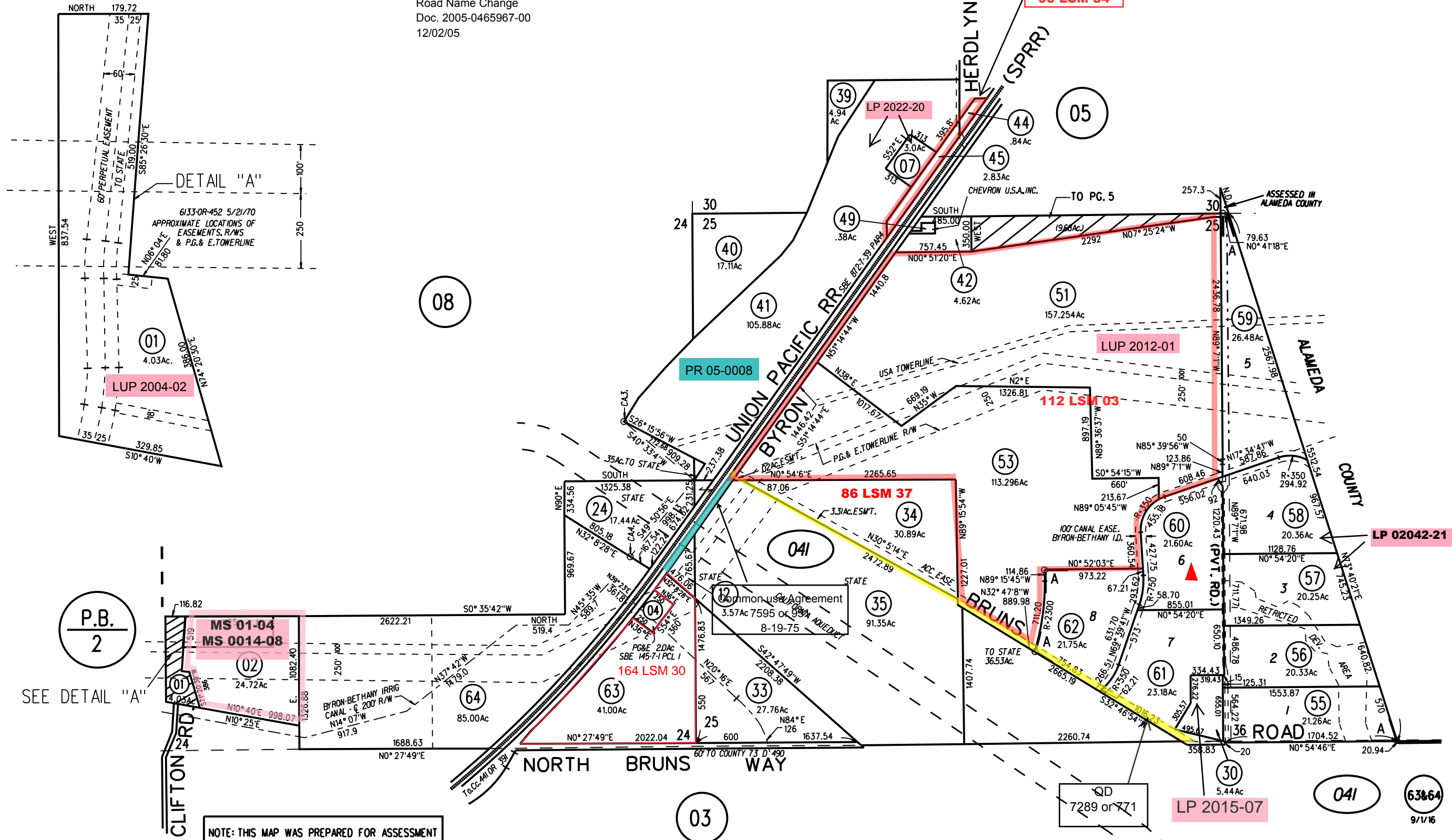


SEC 25, POR SECS 24&36 T1S R3E MDB&M  
 POR SEC 30 T1S R4E MDB&M  
 A- TRACT 7535 MB 452-26 3/26/2003



**▲ CC**  
 Road Name Change  
 Doc. 2005-0465967-00  
 12/02/05



**P.B.**  
 2

SEE DETAIL "A"

NOTE: THIS MAP WAS PREPARED FOR ASSESSMENT PURPOSES ONLY. NO LIABILITY IS ASSUMED FOR THE ACCURACY OF THE INFORMATION DELINEATED HEREON. ASSESSOR'S PARCELS MAY NOT COMPLY WITH LOCAL LOT SPLIT OR BUILDING SITE ORDINANCES.