

CORNER RECORD

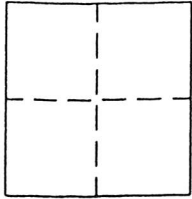
-5073-

City of WALNUT CREEK

Document Number \_\_\_\_\_

County of CONTRA COSTA, California

Brief Legal Description LOT 25, SAN MIGUEL TERRACE (34 M 40)



CORNER TYPE

Government Corner  Control 
Meander  Property 
Rancho  Other 
Date of Survey APRIL 12, 2010

COORDINATES (Optional)

N. \_\_\_\_\_
E. \_\_\_\_\_
Zone \_\_\_\_\_ NAD27  NAD83 
NAD83 Epoch \_\_\_\_\_
Elev. \_\_\_\_\_
Vert. Datum: NVGD29  NAVD88 
Meas. Units: Metric  Imperial

CORNER - Left as found  Found and tagged  Established  Reestablished  Rebuilt

Identifacation and type of corner found: Evidence used to identify or procedure used to establish or reestablish corner:
FD. IP MON.S PER (34 M 40) & SET POINTS PER PAGE 2.

A description of the physical condition of the monument as found and as set or reset:
FD. IP MON.S PER (34 M 40) & SET POINTS PER PAGE 2.

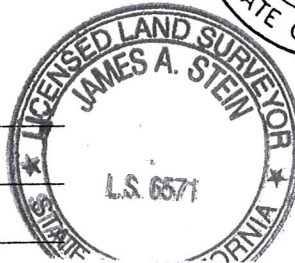
SURVEYOR'S STATEMENT

This Corner Record was prepared by me or under my direction in conform:nce with
the Land Surveyor's Act on APRIL 20 2010
Signed [Signature] P.L.S. or R.C.E. No. PLS 5132



COUNTY SURVEYOR'S STATEMENT

This Corner Record was received May 26<sup>th</sup> 2010
and examined and filed February 25<sup>th</sup> 2016
Signed [Signature] P.L.S. or R.C.E. No. 6571
Title County Surveyor

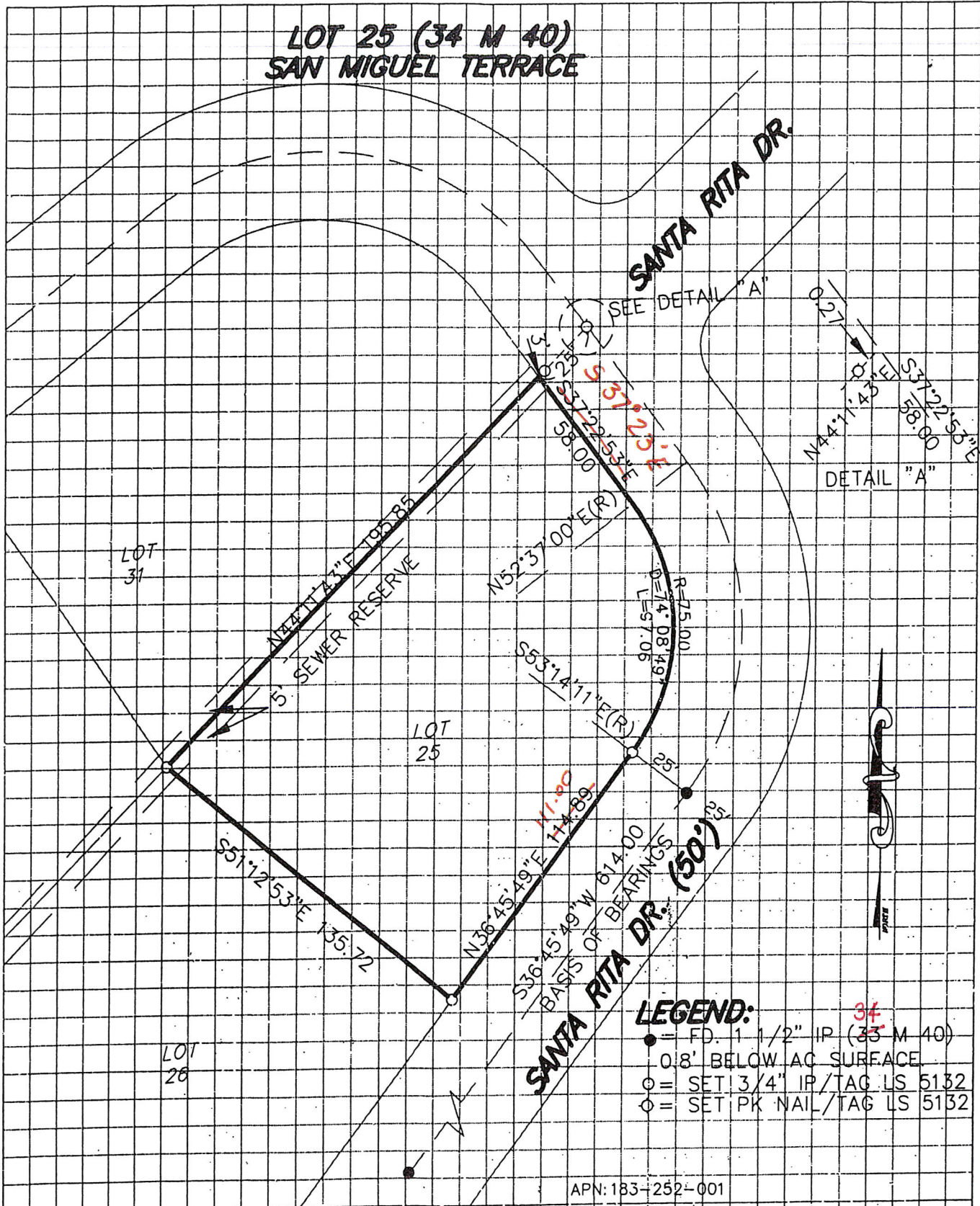


County Surveyor's Comment This corner record was submitted to the County and after review, the stamped and
APN: 183-252-001 signed cardstock was returned for minor corrections. Mr. Harrington passed away
without resubmitting a corrected cardstock. This filing reflects the redlined copy
the County kept on file.

150 CR 6



**LOT 25 (34 M 40)  
SAN MIGUEL TERRACE**



- LEGEND:**
- = FD. 1 1/2" IP (34 M 40)  
0.8' BELOW AC SURFACE
  - = SET 3/4" IP/TAG LS 5132
  - = SET PK NAIL/TAG LS 5132

APN: 183-252-001

**BEN HARRINGTON PLS**

Land Surveying & Mapping

2278 Larkey Lane Walnut Creek, CA 94597 (925)935-7228

DATE:	APRIL 12, 2010
SCALE:	1" = 50'
DRAWING #	2911_CR
CHECKED BY:	BEN

150 C26 ✓