

CORNER RECORD

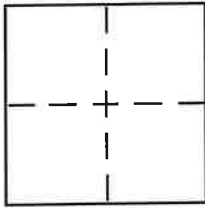
-4737-

Document Number _____

City of TOWN OF DANVILLE

County of CONTRA COSTA, California

Brief Legal Description Resetting of Monuments per 28M46



CORNER TYPE

Government Corner Control
Meander Property
Rancho Other
Date of Survey DEC. 16, 2008

COORDINATES (Optional)

N. _____
E. _____
Zone _____ NAD27 NAD83
NAD83 Epoch _____
Elev. _____
Vert. Datum: NGVD29 NAVD88
Meas. Units: Metric Imperial

Corner - Left as found Found and tagged Established Reestablished Rebuilt

Identification and type of corner found: Evidence used to identify or procedure used to establish or reestablish the corner:

SEE NOTE 1 & SKETCH ON BACK

A description of the physical condition of the monument as found and as set or reset:

SEE SKETCH ON BACK

SURVEYOR'S STATEMENT

This Corner Record was prepared by me or under my direction in conformance with the Land Surveyor's Act on Jan 15 2009

Signed [Signature] P.L.S. or R.C.E. No. 7738



COUNTY SURVEYOR'S STATEMENT

This Corner Record was received Feb 9th 2009 and examined and filed July 27th 2022 (misplaced)

Signed James A. Stein P.L.S. or R.C.E. No. 6571

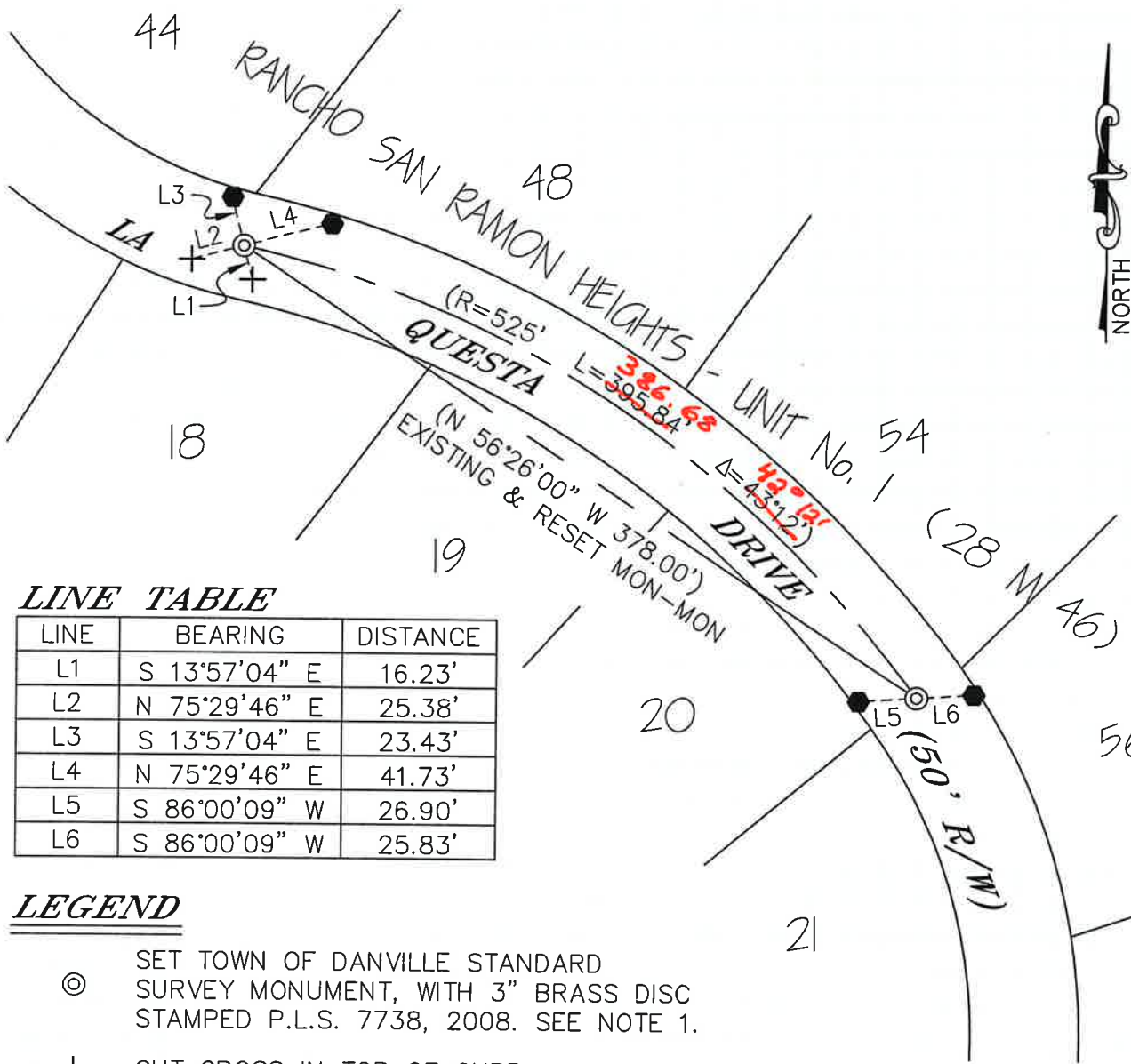
Title County Surveyor



County Surveyor's Comment THE RECORD CENTERLINE LENGTH AND DELTA SHOWN ON THE MAP DO NOT EQUAL THE SUM OF THE LENGTHS AND DELTAS SHOWN ON THE LOT FRONTAGES

APN # 216-151-002-003

**RESET MONUMENT
PER PRE-CONSTRUCTION REFERENCES POINTS
LA QUESTA DRIVE, DANVILLE
CONTRA COSTA COUNTY, CALIFORNIA**



LINE TABLE

| LINE | BEARING | DISTANCE |
|------|---------------|----------|
| L1 | S 13°57'04" E | 16.23' |
| L2 | N 75°29'46" E | 25.38' |
| L3 | S 13°57'04" E | 23.43' |
| L4 | N 75°29'46" E | 41.73' |
| L5 | S 86°00'09" W | 26.90' |
| L6 | S 86°00'09" W | 25.83' |

LEGEND

- ⊙ SET TOWN OF DANVILLE STANDARD SURVEY MONUMENT, WITH 3" BRASS DISC STAMPED P.L.S. 7738, 2008. SEE NOTE 1.
- + CUT CROSS IN TOP OF CURB
- REBAR & PLASTIC CAP, P.L.S. 7738
- () RECORD DATA PER 28 M 46

SEE COMMENT ON FRONT

SCALE: 1" = 80'



NOTE 1

THE EXISTING COUNTY MONUMENT WELLS WITH 1 1/2" BRASS DISC WERE FOUND BY THE CONSTRUCTION SURVEY CREW PRIOR TO THE STORM DRAIN CONSTRUCTION AND REFERENCE POINTS WERE SET AS SHOWN HEREON. MONUMENTS WERE DESTROYED BY THE STORM DRAIN CONSTRUCTION AND REPLACED PER THE REFERENCE POINTS.