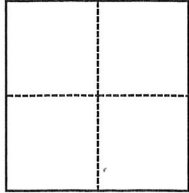


CORNER RECORD

Agency Index 219 CE 45
Document Number 154

City of MORAGA County of CONTRA COSTA, California
Brief Legal Description LOTS 90 & 91 OF SUBDIVISION 6143, 275 M 26, PARCEL A 165 PM 27



CORNER TYPE

- Government Corner
- Meander
- Rancho
- Control
- Property
- Other

Date of Survey JANUARY 4, 1994

COORDINATES (Optional)

N. _____ E. _____
 Elevation _____
 Units Metric U.S. Survey Foot
 Horizontal Datum _____
 Zone _____ Epoch Date _____
 Vertical Datum _____
 Complies with Public Resources Code §§8801-8819
 Complies with Public Resources Code §§8890-8902

- PLS Act Ref.: 8765(d) 8771 8773 Other:
- Corner/Monument: Left as found Established Rebuilt Pre-Construction
 Found and tagged Reestablished Referenced Post-Construction

Narrative of corner identified and monument as found, set, reset, replaced, or removed:
 See sheet #2 for description(s):

SURVEYOR'S STATEMENT

This Corner Record was prepared by me or under my direction in conformance with the Professional Land Surveyors' Act on _____
Signed _____ P.L.S. or R.C.E. No. 5132

COUNTY SURVEYOR'S STATEMENT

This Corner Record was received June 16th 1994
and examined and filed September 16th 2000
Signed James A. Stein P.L.S. or R.C.E. No. 6571
Title County Surveyor



County Surveyor's Comment

This corner record was submitted to the County and after review, the stamped and signed cardstock was returned for minor corrections. Mr. Harrington passed away without resubmitting a corrected cardstock. This filing reflects the redlined copy the County kept on file.

Subsequently after submitting this Corner Record, Mr. Harrington filed a Parcel Map Lot Merger PM-01-94 approved by the Town of Moraga (165 PM 27) that merged Lots 90 and 91 of as shown on the Amended Map of Sanders Ranch Subdivision 6143 (375 M 26) that dissolved the interior line between Lots 90 and 91, creating Parcel "A".

PHYSICAL DESCRIPTION OF MONUMENTS REBUILT OR PERPETUATED

SEE SKETCH BELOW

CALIFORNIA COORDINATE SYSTEM ORDER: FIRST [] SECOND [] THIRD []
 STATIONS USED: NGS (USC & GS) [] STATE [] COUNTY [] OTHER [] STATION _____ STATION _____
 ZONE III ELEVATION _____ NORTHING (Y) _____ EASTING (X) _____

SKETCH: (Include reference tie or witness points, remarks and topo of area. Sketch may be continued or drawn on back of sheet.)

LOTS 90 & 91 OF SUBDIVISION 6143

SANDERS RANCH (275 M 26)

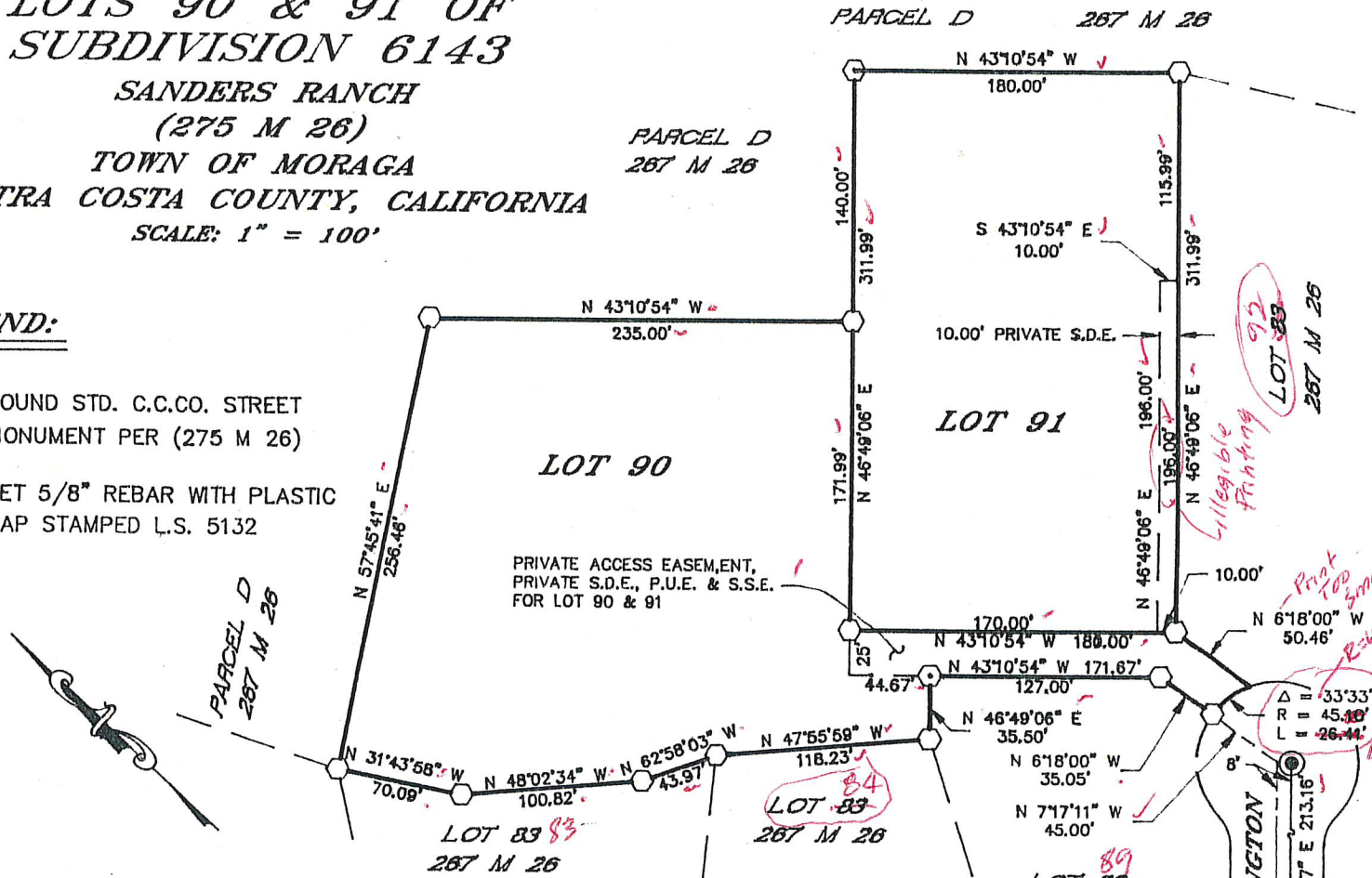
TOWN OF MORAGA

CONTRA COSTA COUNTY, CALIFORNIA

SCALE: 1" = 100'

LEGEND:

- FOUND STD. C.C.CO. STREET MONUMENT PER (275 M 26)
- SET 5/8" REBAR WITH PLASTIC CAP STAMPED L.S. 5132



JOB # 94002

SURVEYOR'S CERTIFICATE

THIS CORNER RECORD WAS PREPARED BY ME OR UNDER MY DIRECTION IN CONFORMANCE WITH THE LAND SURVEYOR'S ACT ON JANUARY 4 19 94

SIGNED: [Signature] L.S. NO. 5132

FILE NO. _____



COUNTY SURVEYOR'S CERTIFICATE

THE CORNER RECORD WAS RECEIVED June 16 19 94 AND EXAMINED AND FILED _____ 19 _____

BY: _____ R.C.E. NO.: _____

TITLE: DEPUTY ROAD COMMISSIONER/SURVEYOR STATEMENT ON BACK OF SHEET: YES [] NO [X]

DOCUMENT NO. _____