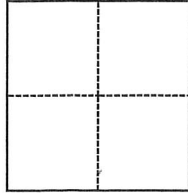


# CORNER RECORD

Agency Index 219 CR 44  
Document Number 153

City of ALAMO County of CONTRA COSTA, California  
Brief Legal Description PARCEL 'B' SUBDIVISION MS 139-77, 64PM8



### CORNER TYPE

- Government Corner
- Meander
- Rancho
- Control
- Property
- Other

Date of Survey 11/15/1993

### COORDINATES (Optional)

N. \_\_\_\_\_ E. \_\_\_\_\_  
 Elevation \_\_\_\_\_  
 Units  Metric  U.S. Survey Foot  
 Horizontal Datum \_\_\_\_\_  
 Zone \_\_\_\_\_ Epoch Date \_\_\_\_\_  
 Vertical Datum \_\_\_\_\_  
 Complies with Public Resources Code §§8801-8819  
 Complies with Public Resources Code §§8890-8902

- PLS Act Ref.:  8765(d)  8771  8773  Other:
- Corner/Monument:  Left as found  Established  Rebuilt  Pre-Construction  
 Found and tagged  Reestablished  Referenced  Post-Construction

Narrative of corner identified and monument as found, set, reset, replaced, or removed:

See sheet #2 for description(s):

### SURVEYOR'S STATEMENT

This Corner Record was prepared by me or under my direction in conformance with  
 the Professional Land Surveyors' Act on \_\_\_\_\_  
 Signed \_\_\_\_\_ P.L.S. or R.C.E. No. 5132

### COUNTY SURVEYOR'S STATEMENT

This Corner Record was received JUNE 16, 1994  
 and examined and filed September 16th 2020  
 Signed James A. Stein P.L.S. or R.C.E. No. 6571  
 Title County Surveyor  
 County Surveyor's Comment



This corner record was submitted to the County and after review, the stamped and signed cardstock was returned for minor corrections. Mr. Harrington passed away without resubmitting a corrected cardstock. This filing reflects the redlined copy the County kept on file.

APN: 197-200-026

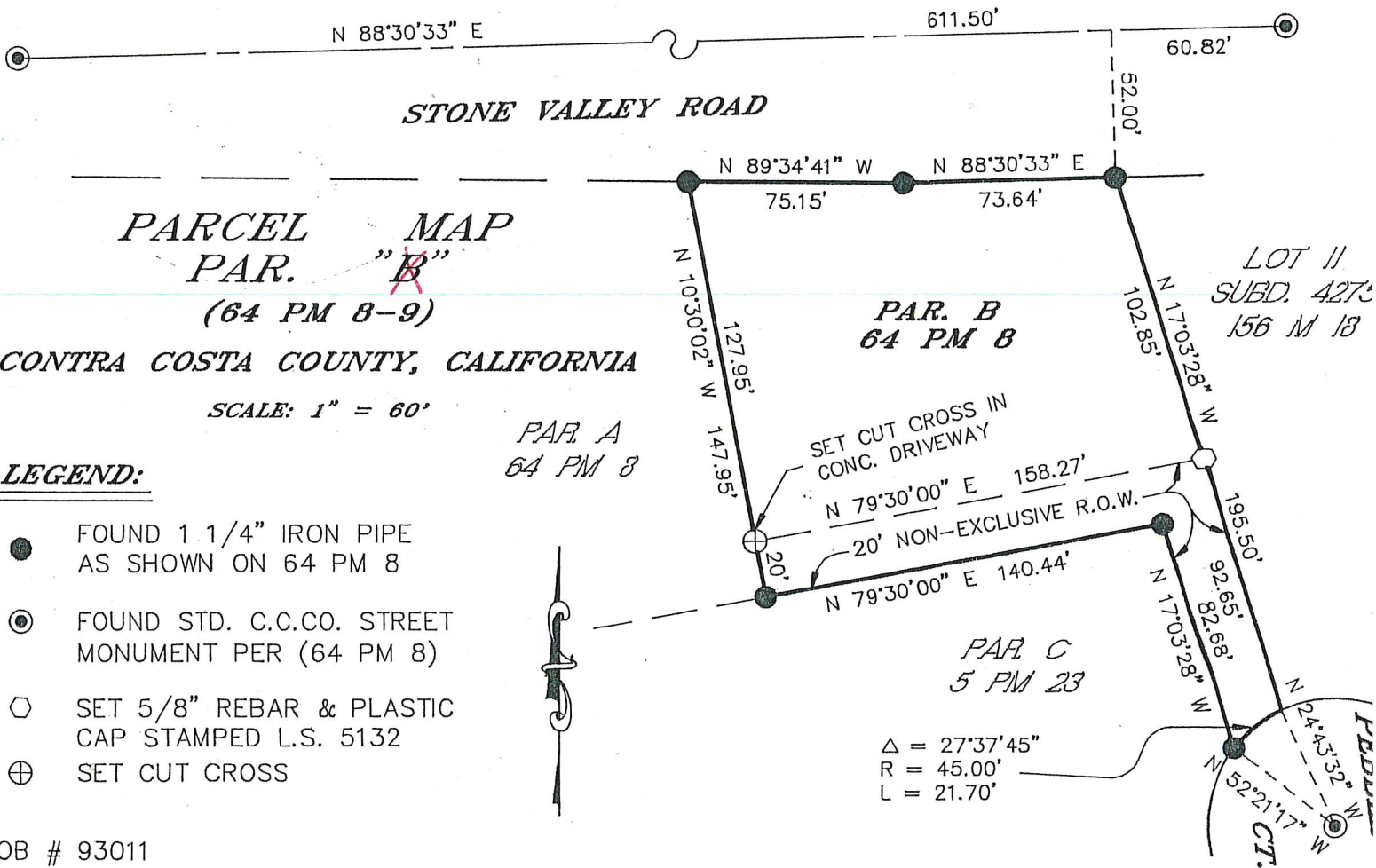
PHYSICAL DESCRIPTION OF MONUMENTS REBUILT OR PERPETUATED

SEE SKETCH BELOW

CALIFORNIA COORDINATE SYSTEM ORDER: FIRST [ ] SECOND [ ] THIRD [ ]  
 STATIONS USED: NGS (USC & GS) [ ] STATE [ ] COUNTY [ ] OTHER [ ] STATION \_\_\_\_\_ STATION \_\_\_\_\_  
 ZONE III ELEVATION \_\_\_\_\_ NORTHING (Y) \_\_\_\_\_ EASTING (X) \_\_\_\_\_

SKETCH: (Include reference tie or witness points, remarks and topo of area. Sketch may be continued or drawn on back of sheet.)

**BASIS OF BEARINGS**



JOB # 93011

SURVEYOR'S CERTIFICATE

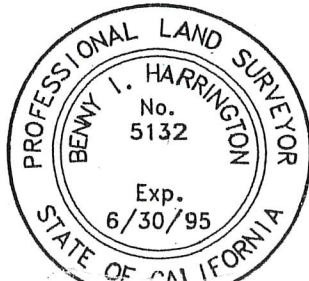
THIS CORNER RECORD WAS PREPARED BY ME OR UNDER MY DIRECTION IN CONFORMANCE WITH THE LAND SURVEYOR'S ACT

ON NOV. 15 1993

SIGNED: *[Signature]*

L.S. NO. 5132

FILE NO. \_\_\_\_\_



COUNTY SURVEYOR'S CERTIFICATE

THE CORNER RECORD WAS RECEIVED June 16 1994 AND EXAMINED AND FILED \_\_\_\_\_ 19\_\_\_\_

BY: \_\_\_\_\_ R.C.E. NO.: \_\_\_\_\_

TITLE: DEPUTY ROAD COMMISSIONER/SURVEYOR  
 STATEMENT ON BACK OF SHEET: YES [ ] NO [X]

DOCUMENT NO. \_\_\_\_\_