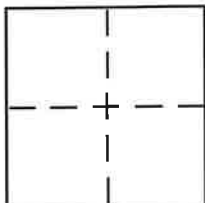


# CORNER RECORD

Document Number \_\_\_\_\_

City of UNINCORPORATED (KENSINGTON) County of CONTRA COSTA, California

Brief Legal Description LOT 14, 'MARINA VISTA (43 M 43)



### CORNER TYPE

- Government Corner  Control
- Meander  Property
- Rancho  Other
- Date of Survey 12 SEPT. 2012

### COORDINATES (Optional)

- N. \_\_\_\_\_
- E. \_\_\_\_\_
- Zone \_\_\_\_\_ NAD27  NAD83
- NAD83 Epoch \_\_\_\_\_
- Elev. \_\_\_\_\_
- Vert. Datum: NGVD29  NAVD88
- Meas. Units: Metric  Imperial

Corner - Left as found  Found and tagged  Established  Reestablished  Rebuilt

Identification and type of corner found: Evidence used to identify or procedure used to establish or reestablish the corner:

FOUND SUBDIVISION DISC MONUMENT

A description of the physical condition of the monument as found and as set or reset:

SET 5/8" REBAR & PLASTIC CAP LS 5252  
SET NAIL & TAG LS 5252

### SURVEYOR'S STATEMENT

This Corner Record was prepared by me or under my direction in conformance with

the Land Surveyor's Act on 13 SEPTEMBER 2012

Signed Jeffrey D. Black P.L.S or R.C.E. No. 5252

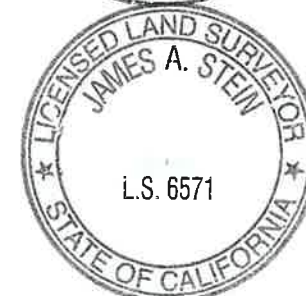
### COUNTY SURVEYOR'S STATEMENT

This Corner Record was received September 26<sup>th</sup> 2012

and examined and filed March 5<sup>th</sup> 2013

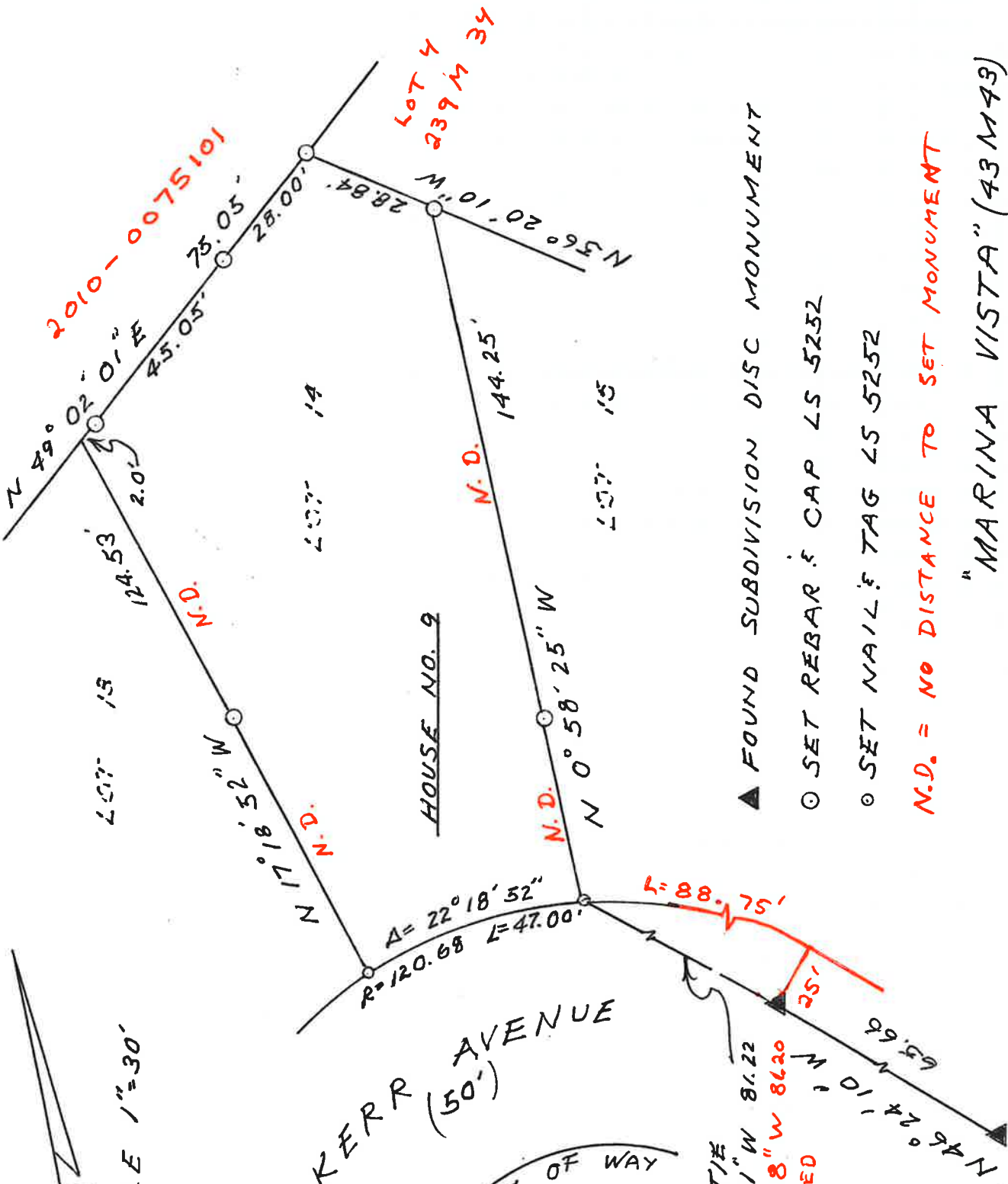
Signed James A. Stein P.L.S or R.C.E. No. 6571

Title County Surveyor



### County Surveyor's Comment

MR. BLACK REQUESTED THAT THIS BE FILED "AS IS".  
I HAVE ADDED MISSING INFORMATION AND NOTED THE  
INCORRECT DIMENSIONS



2010-0075101

LOT 4  
239 M 34

▲ FOUND SUBDIVISION DISC MONUMENT

○ SET REBAR & CAP LS 5232

○ SET NAIL & TAG LS 5252

N.D. = NO DISTANCE TO SET MONUMENT

"MARINA VISTA" (43M49)



SCALE 1"=30'

KERR AVENUE (50')

RIGHT OF WAY

MON. TIE  
N 50° 48' 41" W 81.22  
N 50° 46' 28" W 86.20  
CALCULATED  
RECORD